



# Prior's Mill C.E. Primary School Newsletter June 16th

---

*Welcome to the Prior's Mill Newsletter - this is shared weekly and will contain key dates and information, paper copies are available at the office 16.06.23.*

---

## In This Issue



This week we include:

- **Message from Mr Linsley**
- **Y1 Phonics and Y4 Multiplication Checks**
- **SPA - WE NEED YOU!**
- **Pupil Voice**
- **School Council**
- **Sporting Stars - Athletics**
- **Digital Leaders - Passwords**
- **Attendance**
- **Worship Theme - Hope**
- **Class News - LEGO STARS**
- **Key Dates (Includes Prom Date and NEW EYFS DATES)**
- **NEW! Picture News (We thought you might like to read 'Picture News' this is shared with children in a class worship every week)**

## Sunshine



I hope everyone has the opportunity to enjoy the sunshine this weekend, it is lovely to enjoy it after school and on a weekend but not so easy to work in for pupils and teachers! Thank you for sending your children to school to be sun safe with hats and sprays although Mr Farrell wearing his jumper as he feels cold is maybe not the best form of sun- protection!

As we enter the final part of a busy term thank you for your patience as we work through morning opening due to our revised starting times - we will continually monitor the arrangements and welcome your feedback.

Next Wednesday morning we have 3 Anti-Bullying presentations for Parents, KS1 Pupils and KS2 Pupils this is in response to the questionnaire that parents and pupils completed last term which

requested more information about approaches to bullying in school. We will also be starting work with the Anti-Bullying Alliance in September to run a programme of staff training and pupil activities to ensure our school continues to be a safe place where any bullying issues can be dealt with appropriately. If you would like to attend the parent session it would be lovely to see you it starts at 9am in the KS2 hall and will be presented by a member of the Trust Safeguarding Team.

**At the same time on Wednesday it is Mrs Rowbotham's Class worship at 8:40am in the KS1 Hall - Parents are welcome to join the presentation at KS2 afterwards or wait till the session is repeated in the new academic year.**

**Thursday Morning it is Mrs Mackay's Class Worship in the KS2 hall starting time 8:40am**

## REMINDER

On **Friday 23rd June** we are going to support Ruby Radley with a **non-uniform day**. Ruby has asked if pupils would like to wear **Bright colours or PJs** and bring in a donation that will go towards raising money to convert Ruby's wheelchair into an electric one. Ruby is also competing in a triathlon to raise funds - the details are below and sponsorship money can be passed on in sealed envelopes via the office OR if you would prefer to donate directly then you can use the following link.

<https://www.justgiving.com/crowdfunding/rubyradley>



# PLEASE SPONSOR RUBY



THIS YEAR RUBY WILL BE RIDING HER 4TH BIRTHDAY ON THE 25TH JUNE WE ARE TRYING TO RAISE SOME MONEY TO HELP BUY A PART TO TURN RUBY'S WHEELCHAIR INTO AN ELECTRIC ONE. WITH THE GENEROUS DONATIONS FROM LAST YEAR WE ARE HALFWAY THERE BUT STILL NEED QUITE A BIT OF MONEY AS THIS PART COSTS 24500. ANY SPONSORSHIP NO MATTER HOW LARGE OR SMALL WILL HELP TOWARDS THIS. AS ALWAYS WE RE EXTREMELY GRATEFUL FOR YOUR SUPPORT.

Name	Email	AMOUNT £

## Y1 Phonics and Y4 Multiplication Checks



A reminder to parents in Y1 that the Government Phonics Check is between Monday 12th June and Friday 16th June it is essential that Y1 pupils are in school during this week so they can showcase their fantastic phonics and reading skills.

Well done to all Y1 pupils for completing the check we have sent the results off to be verified and pupils will find out scores later in the term. Thank you to Miss Thompson and the Y1 team for administering the check.

Parents of pupils in Y4 it is important that they are in school from Monday 5th June to Friday 16th June in order to complete the Government Multiplication Check.

## SPA - WE NEED YOU!



In the current economic climate this money is essential in raising funds for things that we would like in school.

It is essential that we are able to create a group of staff and parents that are willing to carry this great work on. Currently the SPA is made up of mainly staff and it would be great to have a few more parents involved. I promise this will not take up a huge time commitment but can be fitted in around your own priorities. It could be 30 mins labelling tombola items or bagging up sweets for a disco.

***We raised £1,178 through the efforts of parents, staff and pupils at our Coronation Event - FANTASTIC!!***

Without increased parental support then a number of additional events such as discos will be cancelled as school does not have the capacity alone to organise and prepare them.

If you can spare any time at all to join SPA then it would be greatly appreciated by the staff team and ultimately by the pupils who will benefit from having a number of events to attend during and after school.

Please contact Mrs Twomey in the office [office@priorsmill.org.uk](mailto:office@priorsmill.org.uk) / 01642650426

## Pupil Voice



Alaina and Harry had the pleasure of showing Mr Cooper, Chair of Governors, Mr Mackings and Mrs Doyle, two directors from the Melrose Learning Trust around school on Friday afternoon. They were fantastic tour guides and all the adults were really impressed with their visit and the learning opportunities that were taking place.

Well Done!





## School Council



School Council have been busy working hard to produce some questions to give to candidates in preparation for a recruitment event that we are holding next week to appoint a new member of staff it is really important that pupils feel their opinion is valued and they can contribute to the ethos and values of the school through the contributions they make to appointing staff.





## Sporting Stars Athletics



A team of 'Athletic Super Stars' represented school at the next round of the Athletics competition at Middlesbrough Sports Village on Monday and had a very successful time. We are incredibly proud of all of them for the way they represented the school. Thank you to Mr Greenwood for organising the visit.

























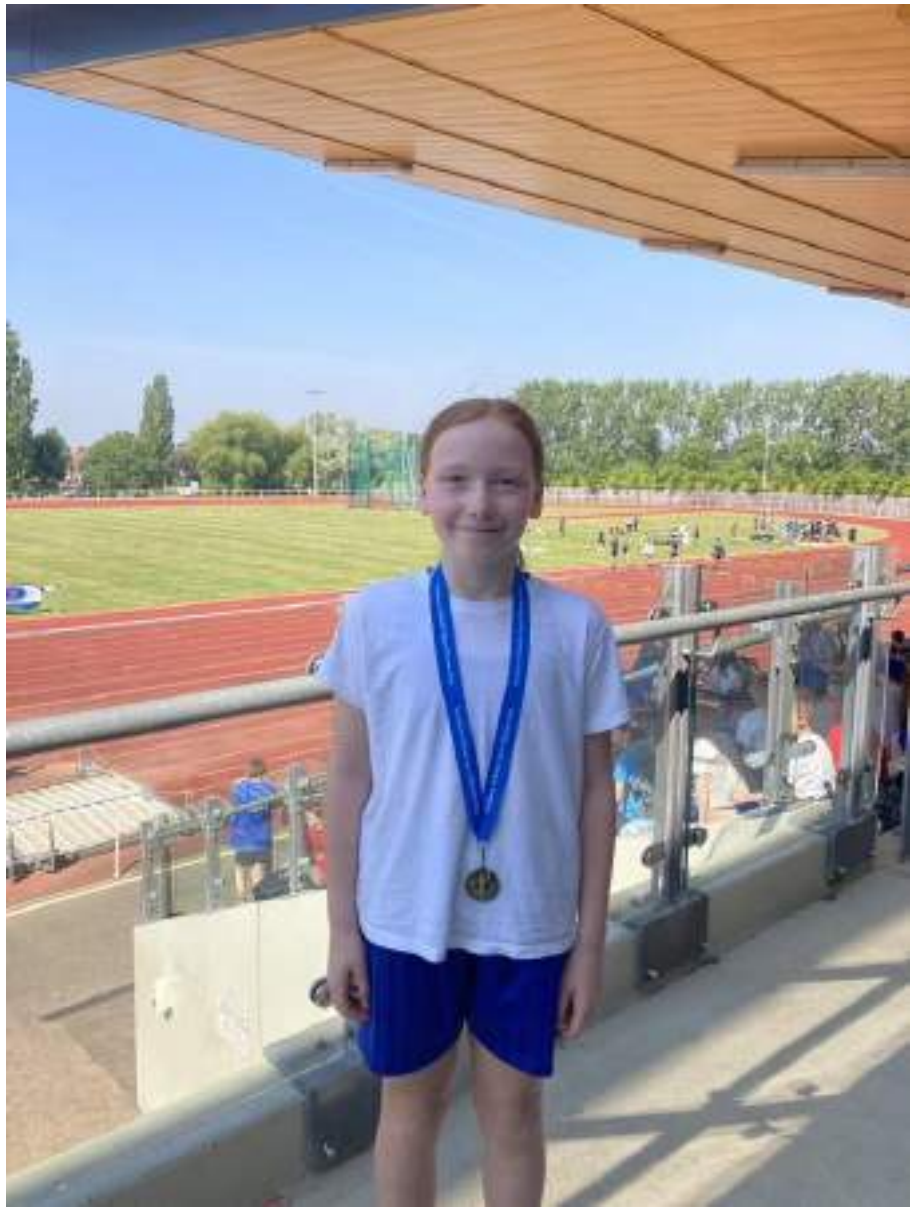




















Digital Leaders - Passwords



All material on this site is for informational purposes only. We do not provide any financial or investment advice. Please visit [www.nationalonlinesafety.gov](http://www.nationalonlinesafety.gov) for further guidance, links and tips for staying safe.

# Ten top tips for STRONGER PASSWORDS

Passwords continue to be the most common way to prove our identity online. A combination of a username and a password known only to the user provides access to our online accounts and data – and hopefully keeps unauthorised individuals out. As a security measure, though, passwords are relatively weak. People are often predictable in how we choose our passwords, for example – making them less secure. With increasing volumes of usernames and passwords being leaked online, what can we do to keep our data more secure? Here are our top tips for stronger passwords.

## BE UNPREDICTABLE

We often choose passwords which are easy to remember, featuring the name of our favourite sports team or favourite film, for instance. Those are predictable passwords. Cyber criminals will routinely try various combinations of passwords relating to sports teams, actors, music or films and the like – and they often focus on these during major sporting events or around high-profile movie releases.

## AVOID GETTING PERSONAL

Many of us use passwords relating to our family, such as children's names or favoured holiday destinations. The problem here is that we also frequently post about our hobbies and our family on social media – making that information potentially visible to cyber criminals and supplying them with clues which could help them to narrow down possible passwords we might have set.

## NEW PLATFORM, NEW PASSWORD

Where cyber criminals gain access to an online service through a data breach, they often use the data they've stolen to try and access the victim's other accounts. This is because the criminals know that, for convenience, people often use the same password across different services. Which is why, passwords, our security is only as strong as the weakest site where we've used it.

## LONGER IS STRONGER

Our passwords are often stored by online services in an encrypted format. In case the service suffers a data breach, the strength of this encryption, however, is dependent on the length of the password you've selected. If your password is only a short one, cyber criminals are significantly more likely to be able to break the encryption and identify your password.

## CHECK SOCIAL MEDIA VISIBILITY

Staying up to date with friends and relatives on social media is part of everyday life now. We need to ensure, though, that we limit who can see our posts via each platform's privacy settings. It's also wise to consider what we're posting and if it's really safe to share online. If we restrict what cyber criminals can see, we reduce the chance of them using that information to identify our passwords.

## Meet Our Expert

A Certified Information Security Lead (CISL) and a member of the Cyber Security Council (CSC), a key member of the Cyber Security Centre (CSC) and a member of the National Cyber Security Centre (NCSC), he has a particular interest in digital forensics and cyber security. He has led a number of projects for the Home Office and the Ministry of Justice.



Source: [www.ncsc.gov.uk/](http://www.ncsc.gov.uk/)

CCTV  
IN OPERATION

SECURITY

## 'DOUBLE LOCK' YOUR DATA

It's possible that cyber criminals may eventually discover your username and password, including multi-factor authentication (MFA) on your accounts, however, reducing the chance of them obtaining access to your data, as they'd also require a code which is provided via an app, SMS message or a mail. MFA isn't available, but it does add an extra layer of protection and security.

## DELETE UNUSED ACCOUNTS

Data breaches occur when cyber criminals gain access to an online service and, of the data stored tied within it – including usernames and passwords. Whenever you stop using a service, it's wise to make sure that you delete your entire account and not just the website app. If the service no longer has your data, there's less risk of it being leaked should they suffer a data breach in the future.

## TRY PASSWORD MANAGERS

Even though most of us have multiple online accounts to manage these days, it's often difficult to avoid passwords re-use. Specialist password management software (like Dashlane or OnePassword, among others) can help by storing a different password for every online service that you have an account with: the only one you or a child will need to remember is the single master password.

## GET CREATIVE

The British government's National Cyber Security Centre (NCSC) recommends the 'three random words' technique. This method helps you create a password which is unique, complex and long – yet which is memorable enough to stay in your mind ('FourBlackWives' for example). The NCSC website incidentally also offers plenty of other useful information relating to personal cyber security.

## STAY VIGILANT

The best way to protect your accounts and your data is to be vigilant and careful. If you receive an email or text message that's unusual or unexpected, treat it as suspicious until you're able to verify whether it's genuine and safe. Starting from a position of vigilance and caution will reduce the likelihood of you or your child being tricked by a malicious email, text or phone call.

**NOS** National Online Safety  
#WakeUpWednesday

@nationalonlinesafety

/NationalOnlineSafety

@nationalonlinesafety

@national\_online\_safety

Users of this guide do so at their own discretion. No liability is entered into. Content as of the date of release: 22.05.2022



This week Beatrice and Luke (Digital Leaders) have chosen the online safety guide and it has a focus on 'Ten Top Tips for Stronger Passwords'. If there are any apps or online sites that parents would like a fact sheet about then please get in touch and we'll try and provide one.

***Any safeguarding concerns can be relayed to:***

***Mr Linsley - Designated Safeguarding Lead***

***Miss Huddart - Deputy Designated Safeguarding Lead***

***The safeguarding policy is on our website and you can also request a paper copy from the office. We will also share with you our pupil version of the safeguarding policy.***



## Attendance Matters



### **IMPORTANT REMINDER**

In accordance with School and Trust Policy any unauthorised absences (that are not subject to exceptional circumstances) will be subject to a fixed penalty notice.

**Current School Attendance is 93.4% (same % from last week) this is below the DFE target of 96%.**

We strongly advise that any holiday in term time should be avoided due to the impact of lost learning time on children. Please be aware that leave of absence (holiday) during term time will not be authorised except in exceptional circumstances. It is school policy to refer any unauthorised absence due to holiday to the local authority who may issue a fixed penalty notice. This is a penalty of up to £120 per child, per parent and so can add up to a significant amount. The school does not receive any revenue from fines; the money is paid to the Local Authority. In addition, we now have a new system in school for pupils who are late. Pupils must be escorted to the office in the main building and a form completed by parents/carers to sign the pupils in and indicate the reason for the lateness. This is for our records and also to avoid pupils becoming distressed.

**All gates are opened at 8.20am, KS1 & 2 staff will be in attendance and children remain in the yard until school doors are opened just before 8.30am. For Nursery and Reception children gates are**

opened for access and to ease congestion on Clifton Avenue and staff are not in attendance until school doors are then opened just before 8.30am. Children should remain supervised until then. Pre-School will open at 8:25am.

**LATE MARKS ALSO IMPACT NEGATIVELY ON ATTENDANCE PLEASE TRY TO BE ON TIME!**

## Worship Theme - Hope



### Hope

This week we based collective worship around Hope - this is important to us as it links directly to our school vision and values as well as the parable of the mustard seed.

Read The Parable of the Mustard

Seed (Matthew 13:31-32) 'The smallest of seeds... becomes a tree.'

In this parable, Jesus teaches that although the Kingdom of God started small, with Jesus and the disciples, it would grow and spread across the world to unlimited numbers of followers.

The birds represent Gentile people. Jesus is saying that the Kingdom of God will include other nations and not just God's chosen people, the Jews.

<https://www.youtube.com/watch?v=hW-4bLODob8>

'Hope is a baton, something to be held onto but also passed on. Hope comes to us... to flow through us.'

Art club produced some lovely outdoor Art inspired by the whole school collective worship on Monday.



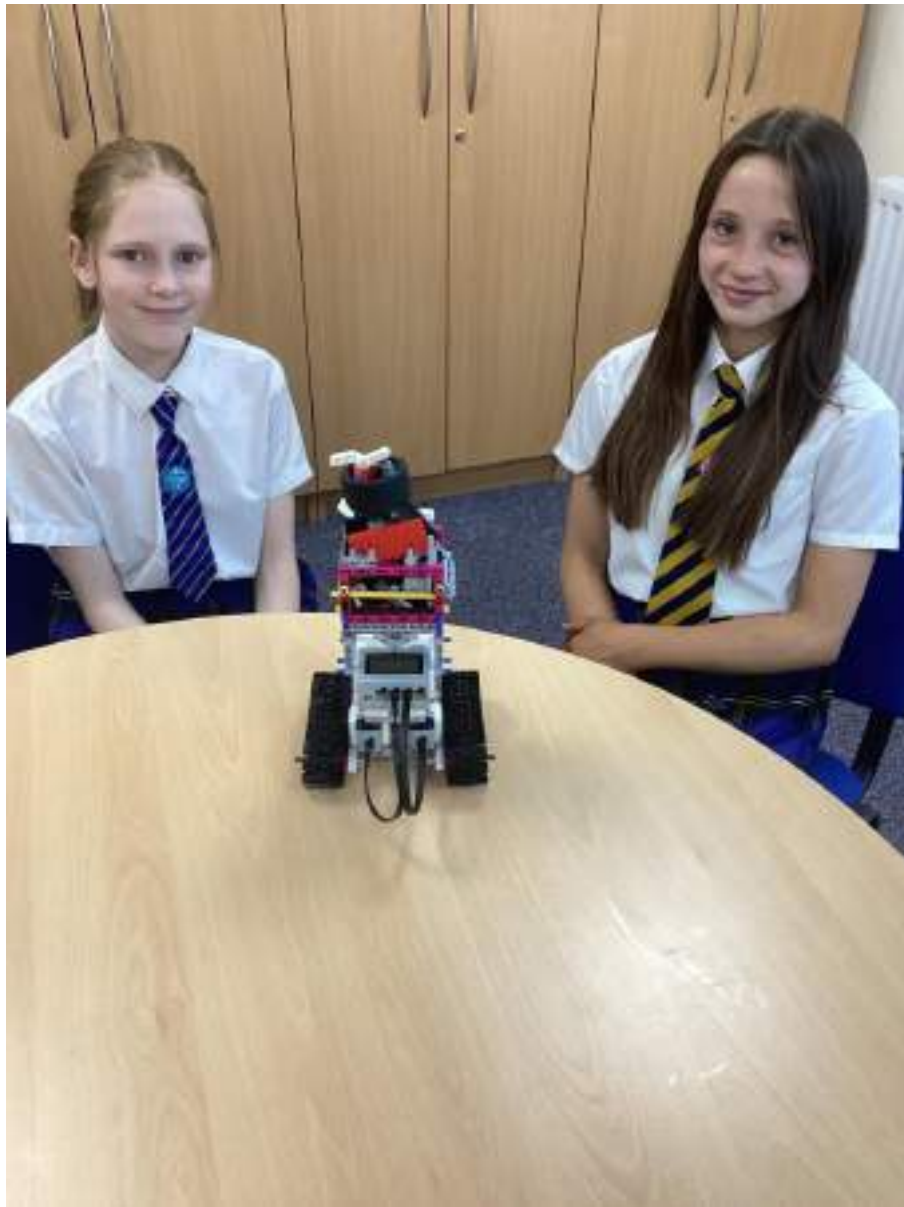






Class News - Y6 Lego Stars









## KEY DATES



### *Key Dates*

5th May Coronation of King Charles III

From 2-3pm Friday 5th May we will provide activities in each classroom and you are welcome to join us for refreshments and cakes in the KS1 & KS2 halls, we will have a children's tombola in each hall and the raffle will also be drawn that day.

Following refreshments children can be collected from their class at 2.50pm but will need to be signed out with the class teacher.

Children who have not been collected will be dismissed at usual time.

15th May

Christian Aid Week

15th May

Walk to School week

17th May - Reception School Trip - Hardwick Park

23rd May

School Council Charity Day

EY – Teddy Bears

KS1 – Turtle Day

KS2- Mind

5th June - School PD Day (Closed)

6th June - School Re-opens using New Start Time 8:30am

8th June

National Best Friends Day

13th June

Grandads wheels visit.

**Wednesday 21st June**

**Anti-Bullying Workshop Parents for 9am KS2 Hall**

**Mrs Rowbotham Collective Worship**

**Mrs Mackay Collective Worship**

**\*NEW\* 23rd June**

**Bright Colour / PJ Day Raising Money for Ruby**

**26th June**

**National school sports week - Children are invited to come to school wearing sports clothes and trainers during this week. They will be taking part in a variety of sporting activities.**

**Whole week to include sports day**

**EYFS SPORTS DAY - Reception Class will hold their own Sports Day on Wednesday ....2pm. Parents are invited to join us! Please bring your running shoes!!! Children can be taken home after the event.**

**3rd July**

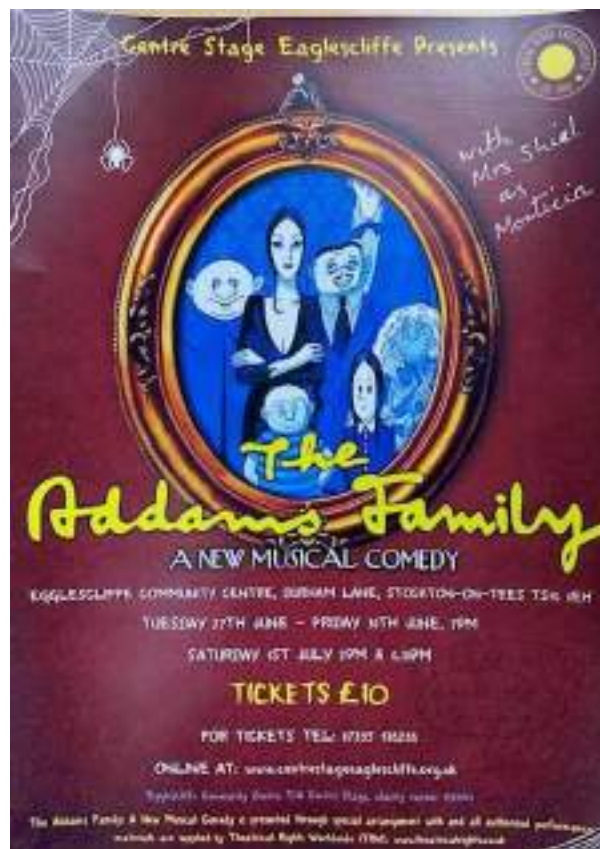
## National Fieldwork Week

### Save the Date

**The Year 6 Prom will be held on Tuesday 11th July at 6pm. Further information to follow.**

Nursery's Teddy Bears Picnic - **Friday 14th July 1.45pm -3pm** - Please come and join us for an end of term Teddy Bears Picnic! This will take place in our Nursery Outdoor garden. This will be an opportunity for all of the children and parents to join together before the children move onto the next step of their journey. If your child attends morning nursery or the pre-school setting then they are welcome to join this picnic too! Additional details to follow closer to the time!

Class 1 and Class 2 - End of Year Graduation - **Monday 17th July, 1.45pm – 3pm** - Please join us to celebrate and congratulate the children's fantastic achievements and look back on their special memories from their treasured time in Early Years! We will mark this momentous milestone by awarding each child with an end of year personalised certificate as a keep sake for their magical journey throughout Early Years! We value the partnership we have built up between us and yourselves and would love for you to be a part of this occasion!



1 - Our own Mrs Shiel is starring in this production of the Addams Family! Tickets are on sale now.



2 - And Finally....have a lovely weekend and take care in the sunshine. I hope the cricket fans enjoy the Ashes we are hoping to be inspired as we attend the next round of the school cricket competition next week.

## Primary Picture News Resource England Collective Worship - 12th June - Sleeping outside



## Let's look at this week's story



13-year-old Max Woosey - also known as the 'Boy in the Tent' - has recently set a Guinness World Record for the most money raised by camping. Inspired by a family friend, the young teenager has raised over £750,000 for North Devon Hospice. Max spent every night in a tent since he began his challenge three years ago in the garden of his home in Braunton, Devon. 'It's been the best three years of my life,' he said, describing the challenge.



Learn more about this week's story [here](#).  
Watch this week's useful video [here](#).  
This week's Virtual Picture News [here](#).



© 2020 Pearson Education, Inc.

## How does it make me feel?



sad	angry	happy	confused	excited	worried	shocked	afraid
depressed	agitated	laughing	stunned	amused	apprehensive	astonished	alarmed
discouraged	annoyed	thrilled	stumped	delighted	anxious	astounded	apprehensive
downcast	displeased	chummy	stumped	thrilled	apprehensive	astounded	alarmed
downhearted	displeased	contented	stumped	thrilled	apprehensive	astounded	alarmed
forlorn	displeased	delighted	stumped	thrilled	apprehensive	astounded	alarmed
gloomy	displeased	amused	stumped	thrilled	apprehensive	astounded	alarmed
melancholy	displeased	amused	stumped	thrilled	apprehensive	astounded	alarmed
morose	displeased	amused	stumped	thrilled	apprehensive	astounded	alarmed
upset	displeased	amused	stumped	thrilled	apprehensive	astounded	alarmed
worried	displeased	amused	stumped	thrilled	apprehensive	astounded	alarmed

© 2020 Pearson Education, Inc.

This week's story looks at events related to ...



Read through the information below about Joe's challenge.

**What is the Record and what would it be to break?**

There are 1000 hours recorded for the world record for the time taken to complete a marathon, and it's only 2700 hours for the fastest time. How long would it take to complete a marathon in 1000 hours?

**Why did Joe decide to complete the challenge?**

Joe was a professional athlete and he had a goal to complete a marathon in 1000 hours. He was a professional athlete and he had a goal to complete a marathon in 1000 hours. He was a professional athlete and he had a goal to complete a marathon in 1000 hours.



I think it's a challenge about completing a long distance in a short time. It's a challenge to get something done in a short time. It's a challenge to get something done in a short time.



Do you believe you would have found this challenge hard or easy? Explain why.

**Challenge**



Imagine you were in the following way for a challenge. It's a challenge to complete a long distance in a short time.

- Mountain
- Desert
- Snow
- Rain
- Heat
- Wind
- Fog
- Ice
- Storm



When you are going to bed or you are sleeping, a bear is in the room. It's a challenge to complete a long distance in a short time.



Think about what a better challenge would be for you. It's a challenge to complete a long distance in a short time.

It's a challenge to complete a long distance in a short time. It's a challenge to complete a long distance in a short time.

Do you think of any other challenges you may face, if you slept in a tent every night?



Look at the resource below, which shows some situations people may face.



Feeling lonely and sad.



A big school task.



Winning a trophy.



Feeling lonely and sad.



A big school task.

Have you ever faced any of these situations? How did you feel? Were you able to overcome it/them? Did anyone help you?



## Reflection

There are many ways we can show our support and raise awareness of things that are important to us. By challenging ourselves and pushing our limits, we can accomplish incredible things!



### Individual Liberty

We all have the right and freedom to raise awareness of the things that are important to us. We should consider how we choose to do this and the impact it may have on others. We can all make a positive difference!

### Protected Characteristics

Max was 10 years old when he took on his challenge. We can all set ourselves goals and challenges and achieve amazing things. Nobody should judge, underestimate or treat anyone unfairly because of their age.







# UN Rights of a Child



We have the right to share freely with others what we Learn, think or feel unless it harms other people.



## Useful vocabulary



**Accomplish**  
To finish something successfully or to achieve something.  
My challenge was to read and finish my book, so I can accomplish something!

**Challenge**  
Something difficult that you try to do or achieve, or that you have to do.  
It's been the best three years of my life, so I'm taking the challenge.

**Inspired**  
Made to feel or act in a particular way.  
Inspired by a family friend, the young composer has shared about 100,000 of his best music.

**Obstacle**  
Something that blocks the way or prevents or slows progress.  
What are the obstacles or difficulties that you have faced over the past five years?

**Praised**  
Expressed admiration or approval for the achievements or characteristics of a person or thing.  
She has been highly praised for how she has supported her neighbor.

**Territorial**  
Plans done very easily and in great numbers.  
Through territorial planning, the city has become a more livable and beautiful place.

Can you use them in your writing this week?

## Collective worship



With our children at home, we can still have a collective worship at home.



**Prayer book**  
A book of prayers for use in church or other religious services.

**Prayer book**  
A book of prayers for use in church or other religious services.

**Prayer book**  
A book of prayers for use in church or other religious services.

**Prayer book**  
A book of prayers for use in church or other religious services.



## Picture News

## Picture News

## Picture News

**What is the best way to live your religion?**  
The best way to live your religion is to follow the teachings of your faith and to be kind to others.

**What would be some challenges of living in a different religion?**  
Some challenges of living in a different religion would be to understand and respect the beliefs of others.

**How is your religion helping?**  
My religion is helping me to be a better person and to love others.

**Reflection**  
Think about what you have learned and how it will help you in your life.

**Reflection**  
Think about what you have learned and how it will help you in your life.

**Reflection**  
Think about what you have learned and how it will help you in your life.

### Picture News

#### CE2 Follow-up ideas

##### Lesson 1

Use the opportunity of this lesson to discuss the poem and to check on any misunderstandings. You could do the following activities:

- Read to the children
- Discuss the vocabulary used especially about the idea of a 'dark' or 'black' as a metaphor
- Ask the children to explain the metaphor
- Write a short poem about a 'dark' or 'black' metaphor
- Write a short poem about a 'dark' or 'black' metaphor
- Write a short poem about a 'dark' or 'black' metaphor

Share your poems and discuss them with the children in the classroom.

##### Lesson 2

Use the opportunity of this lesson to discuss the poem and to check on any misunderstandings. You could do the following activities:

- Read to the children
- Discuss the vocabulary used especially about the idea of a 'dark' or 'black' as a metaphor
- Ask the children to explain the metaphor
- Write a short poem about a 'dark' or 'black' metaphor
- Write a short poem about a 'dark' or 'black' metaphor
- Write a short poem about a 'dark' or 'black' metaphor

### Picture News

#### CE2 Follow-up ideas

##### Lesson 1

Use the opportunity of this lesson to discuss the poem and to check on any misunderstandings. You could do the following activities:

- Read to the children
- Discuss the vocabulary used especially about the idea of a 'dark' or 'black' as a metaphor
- Ask the children to explain the metaphor
- Write a short poem about a 'dark' or 'black' metaphor
- Write a short poem about a 'dark' or 'black' metaphor
- Write a short poem about a 'dark' or 'black' metaphor

##### Lesson 2

Use the opportunity of this lesson to discuss the poem and to check on any misunderstandings. You could do the following activities:

- Read to the children
- Discuss the vocabulary used especially about the idea of a 'dark' or 'black' as a metaphor
- Ask the children to explain the metaphor
- Write a short poem about a 'dark' or 'black' metaphor
- Write a short poem about a 'dark' or 'black' metaphor
- Write a short poem about a 'dark' or 'black' metaphor

Share your poems and discuss them with the children in the classroom.

### Picture News

#### This week's useful activities

**This week's main story**  
Use the opportunity of this lesson to discuss the poem and to check on any misunderstandings. You could do the following activities:

**This week's useful ideas**  
Use the opportunity of this lesson to discuss the poem and to check on any misunderstandings. You could do the following activities:

**This week's useful ideas**  
Use the opportunity of this lesson to discuss the poem and to check on any misunderstandings. You could do the following activities:

**This week's useful ideas**  
Use the opportunity of this lesson to discuss the poem and to check on any misunderstandings. You could do the following activities:

**This week's useful ideas**  
Use the opportunity of this lesson to discuss the poem and to check on any misunderstandings. You could do the following activities:

**This week's useful ideas**  
Use the opportunity of this lesson to discuss the poem and to check on any misunderstandings. You could do the following activities:

**This week's useful ideas**  
Use the opportunity of this lesson to discuss the poem and to check on any misunderstandings. You could do the following activities:

**This week's useful ideas**  
Use the opportunity of this lesson to discuss the poem and to check on any misunderstandings. You could do the following activities:

## SPOTLIGHT

### Extreme E—electric Car Racing



Extreme E is a new form of electric car racing that is set to take place in some of the most remote and extreme locations on the planet. The cars are small, two-wheeled vehicles that are powered by electric batteries. They are designed to be able to drive in some of the most challenging environments on the planet, such as the Arctic and Antarctica. The cars are expected to be used in a number of different locations, including the Arctic, Antarctica, and the Amazon rainforest. The cars are expected to be used in a number of different locations, including the Arctic, Antarctica, and the Amazon rainforest. The cars are expected to be used in a number of different locations, including the Arctic, Antarctica, and the Amazon rainforest.

## Pine Marten Resurgence

A pine marten has been seen in a garden in the north of Scotland. The pine marten is a small, cat-like mammal that is found in the forests of Scotland. It is a member of the weasel family and is known for its ability to climb trees. The pine marten is a carnivorous animal and is known for its ability to hunt and kill its prey. The pine marten is a common sight in the forests of Scotland and is a popular sight for many people. The pine marten is a common sight in the forests of Scotland and is a popular sight for many people. The pine marten is a common sight in the forests of Scotland and is a popular sight for many people.



## Green Grand Canal

Water is the lifeblood of our communities, and it's essential to ensure that it's clean and safe for everyone to drink. The Grand Canal in London is a vital part of our water supply, and it's important to keep it clean and healthy. The Grand Canal is a natural waterway that has been used for centuries. It's a beautiful sight, and it's a great place to enjoy a walk or a picnic. The Grand Canal is also a great place to see some of the best architecture in London. The buildings along the canal are some of the most beautiful in the city, and they're a great example of the city's rich history and heritage.



The Grand Canal is a natural waterway that has been used for centuries. It's a beautiful sight, and it's a great place to enjoy a walk or a picnic. The Grand Canal is also a great place to see some of the best architecture in London. The buildings along the canal are some of the most beautiful in the city, and they're a great example of the city's rich history and heritage.

## Last week's topic

### Could your local area be more inclusive?

Read the article below and think about the most important things you can do to make your local area more inclusive.



Read the article below and think about the most important things you can do to make your local area more inclusive.

Read the article below and think about the most important things you can do to make your local area more inclusive.

Read the article below and think about the most important things you can do to make your local area more inclusive.

### Let us know what you think about this week's issue!

- 1. I agree with the article.
- 2. I disagree with the article.
- 3. I don't know what I think.
- 4. I don't have time to read the article.
- 5. I don't have time to write a comment.

Share your thoughts and see the opinions of others

www.gov.uk/your-voice



## TAKE HOME



Which way would you like to show your support?

## In the news this week

There are many ways to show your support for the things you care about. You can write a letter to your local MP, or you can sign a petition. You can also talk to your friends and family about the things you care about, and encourage them to do the same. There are many ways to show your support, and it's important to find the one that works best for you.

### Things to talk about at home

- 1. What are the things you care about most?
- 2. How can you show your support for these things?
- 3. How can you encourage your friends and family to do the same?

Please add any interesting thoughts or comments

Share your thoughts and see the opinions of others

www.gov.uk/your-voice



## Contact Us



*If you would like to contact us about anything in the newsletter or need an additional conversation then please don't hesitate to catch me outside on the yard or through making an appointment at the office.*

### Safeguarding

The school safeguarding policy is on the website and a paper version can also be requested from the office. Safeguarding is at the heart of all we do at Prior's Mill CE Primary School.

### Prior's Mill C.E. Primary School

Clifton Avenue, Billingham. Stockton-on-Tees, TS22 5BX

Tel: 01642 650 426

Email: [office@priorsmill.org.uk](mailto:office@priorsmill.org.uk)

Visit us on the web at <https://priorsmill.org.uk/>

### **School Vision**

As an inclusive Church of England primary school, we welcome children and families of all faiths and none to be part of our school family which has a distinctly Christian character and ethos. At Prior's Mill, we encourage everyone to discover, flourish and grow in their talents, nurturing their God given gifts and potential. We work with passion to foster a love of learning, a love of community and personal resilience. Following in the footsteps of Jesus, we are a school where kindness, forgiveness, respect and honesty underpin our words and actions.

### **Biblical Narrative - The Parable of The Mustard Seed – Mark 4:30-32 (NIV)**

“What shall we say the kingdom of God is like, or what parable shall we use to describe it? It is like a mustard seed, which is the smallest of all seeds on earth. Yet when planted, it grows and becomes the largest of all garden plants, with such big branches that the birds can perch in its shade.”

### **School Values**

We give our best - We are kind - We are honest - We are respectful - We forgive