



Prior's Mill C.E. Primary School Newsletter October 20th 2023

Welcome to the Prior's Mill Newsletter - this is shared weekly and will contain key dates and information, paper copies are available at the office 20.10.23

In This Issue



This week we include:

- **Message from Mr Linsley**
- **SPA - WE NEED YOU**
- **BBC 500 Words**
- **Digital Leaders - EA SPORTS FC 24**
- **Attendance**
- **Spirituality**
- **Worship Theme - Vulnerability**
- **Class News**
- **Key Dates**
- **NEW! Picture News (We thought you might like to read 'Picture News' this is shared with children in a class worship every week)**

A Busy Week



SIAMS Inspection

On Monday the school will be receiving a Church SIAMS inspection, the inspector will be around on the morning and will be hoping to catch some parents about their thoughts and feelings about our role as a Church of England School. Thank you to all those parents who completed the online survey we will share the results with you next week.

Road Closures

A reminder to parents that next week Whitehouse Road will be shut between 9am and 2:30pm on Thursday and Friday this may lead to added pressure at collection time for some parents. Please allow yourself extra time to collect and consider if you can park further away and walk in . Fingers crossed the weather is better.

Online Safety Meetings

Mr Farrell will again be organising drop in sessions for parents after Christmas to support with any questions or advice you need about any new devices you have received and any of the apps that are on them Please check out our EA Sports FC 24 guide in the newsletter this week.

Harvest

We would like to encourage everyone in the school community to drop off donations of tinned food and non-perishable items so that we can make hampers as part of our harvest festival celebrations. Pupils would like these hampers to go to deserving members of the local community. If you have any suggestions please can you let the office at KS1 and KS2 know.

New Website Launch

<https://priorsmill.org.uk/>

This week we launched the new school website please check it out for all the up to date school information and links to the school Facebook feed. It also contains updated information about Safeguarding and the new child protection policy that the school uses. If you would like a copy of the policy or any other documentation that can be found on the website then please ask at the school office.

Prior's Promise Pals

We are looking for 2 pupils in each year group to be a Prior's Pupil Pal and identify children in school who display the Prior's Promise school values on a regular basis.

*** We are Honest**

*** We are Kind**

*** We give our Best**

***We Forgive**

***We are Respectful**

Congratulations to the following Children who start in their role as Prior's Promise Pals next week - the standard of applications was so high that everyone who completed an application form will get chance to take part. The next group of children will start after Christmas.

KS1

Everly, Noah, Grace, Lily and Thea

KS2

Christopher and Holly

Harvey, Daisy and Maria

Jessica and Tiah

Isaac and Laurie

Freya, Luke and Grace

Billingham United Football Club

Billingham United FC have asked us to advertise that they are looking specifically for Girls to join their Y4 Team if you are interested then please get in touch with the club directly. If you are not a girl in Y4 but are interested in joining one of the teams organised by the club then they would also like to hear from you.

SRC Bede Sports Centre, Marsh House Ave, Stockton-on-Tees, Billingham TS23 3EH

committee@billinghamunited.co.uk

<https://billinghamunited.co.uk/contact/>

Holidays in Term Time

We have had a huge increase in holiday forms lately and although I can appreciate the challenges created by the cost of living crisis and the incredible cost of going away in the school holidays - going away during term time is not the answer. The results we obtained last year reflected how well children with good attendance did compared to those with a number of absences. I appreciate that there are some situations where it may be unavoidable and each case is looked at individually, however if you do require time off from school during term time please consider the following information:

- A holiday request form must be submitted 4 weeks prior to the event
- Leave of absence without completing a form will result in a fixed penalty notice for both parents
- We are currently issuing fixed penalty notices for absences longer than 5 days that do not meet the criteria

The school is working very hard to support parents and pupils to attend regularly and achieve highly - Mrs Hanson our Pupil Welfare Officer is available to talk to if you need support. The school has to follow very strict guidelines surrounding school absence please understand that we are here to support and only want the best for you and your children. Positive attendance provides many opportunities to develop knowledge, understanding and social skills.

Parking and Dogs

Please can I ask all parents not to park across residential driveways near to school we have had a number of incidents reported this week where residents have returned home to find their driveways blocked. We have also been told that drivers have responded angrily and been abusive to residents when asked to move. I appreciate the parking challenges but would urge parents to respect the homes and driveways of people in the local community as any adverse behaviour and reaction reflects badly on the school. I've approached the local council to explore ways in which parking can be improved.

We had an incident yesterday where a pupil was attacked by an unattended dog tied to the school railings please can all dogs be kept on lead and not left unattended. It is against school policy to allow dogs on site.

I have included some key reminders about next week below:

Parent Consultations Wednesday 25th after school

If you have any queries, worries or safeguarding concerns over the holidays/weekend then please use the email address:

office@priorsmill.org.uk

The email account will be monitored throughout the holidays/weekends and we will endeavour to reply to any queries as soon as possible.



- Make friends
- Develop my skills
- Socialise
- Learn
- grow

*Attendance is
important*



BBC 500 Words Competition



BBC's 500 Words is the UK's largest children's story writing competition for 5-11 year-olds. Opens Tuesday 26 September - Friday 10 November. Please click the link below for further information as the whole school will have the opportunity to take part!

<https://www.bbc.co.uk/teach/500-words/about-500-words/zctk7v4>

Digital Leaders - EA SPORTS FC 24





This week Beatrice and Luke (Digital Leaders) have chosen the online safety guide and it has a focus on upsetting content. If there are any apps or online sites that parents would like a fact sheet about then please get in touch and we'll try and provide one.

Any safeguarding concerns can be relayed to:

Mr Linsley - Designated Safeguarding Lead

Miss Huddart - Deputy Designated Safeguarding Lead

The safeguarding policy is on our website and you can also request a paper copy from the office. We will also share with you our pupil version of the safeguarding policy.

At National Online Safety, we believe in empowering parents, carers and trusted adults with the information to hold an informed conversation about online safety with their children. Should they feel it's needed, this guide provides one of many games which we believe present a risk to children's online safety. Please do not use this guide as a basis for action.

What Parents & Carers Need to Know about EA SPORTS FC 24

After two decades of holding the official FIFA license, EA Sports' phenomenally successful football video game series has embarked on a solo run at goal. This season's iteration marks the debut appearance of a new name – EA Sports FC 24. And don't let those two words – EA Sports FC 24 – let it all seem simpler preparation to last year's EA Sports FC 23. Popular features such as Ultimate Team™ remain a big focus, meaning that potentially costly in-game spending is still among the line-up of risks that parents and carers should be aware of.



WHAT ARE THE RISKS?

RECURRING RELEASES
EA Sports FC 24 effectively picks up the FIFA template – meaning that every year it will have a new version. EA Sports FC 24 is not the only EA Sports FC game to be released, but young fans of the game are not aware of the risk that EA Sports FC 24 will be replaced by EA Sports FC 25 in the next year.

OFFENSIVE VOICE CHAT
EA Sports FC 24 introduces cross-platform play, and EA Sports FC 24 does a step further with clubs, behaviors and offensive voice chat. EA Sports FC 24 is a game that is designed to be played with friends online – but connecting a much wider audience of players. EA Sports FC 24 is a game that is designed to be played with friends online – but connecting a much wider audience of players.

IN-GAME PURCHASES
EA Sports FC 24 introduces a new feature called EA Sports FC 24 Ultimate Team™. EA Sports FC 24 Ultimate Team™ is a game mode that allows players to build their own Ultimate Team™. EA Sports FC 24 Ultimate Team™ is a game mode that allows players to build their own Ultimate Team™.

RESTRICTION PEGI 3

ULTIMATE TEAM SCAMMERS
Since the mode was introduced, Ultimate Team™ has been a target of scammers who attempt to cheat players into buying or selling items. EA Sports FC 24 Ultimate Team™ is a game mode that allows players to build their own Ultimate Team™.

POTENTIAL FOR ADDICTION
EA Sports FC 24 is a game that is designed to be played with friends online – but connecting a much wider audience of players. EA Sports FC 24 is a game that is designed to be played with friends online – but connecting a much wider audience of players.

Advice for Parents & Carers

CONTROL SPENDING
If your child enjoys EA Sports FC 24, it's important that you pay attention to their spending. EA Sports FC 24 is a game that is designed to be played with friends online – but connecting a much wider audience of players.

DEFEND AGAINST SCAMMERS
EA Sports FC 24 Ultimate Team™ is a game mode that allows players to build their own Ultimate Team™. EA Sports FC 24 Ultimate Team™ is a game mode that allows players to build their own Ultimate Team™.

AVOID EXTRA TIME
EA Sports FC 24 is a game that is designed to be played with friends online – but connecting a much wider audience of players. EA Sports FC 24 is a game that is designed to be played with friends online – but connecting a much wider audience of players.

SHOW TOXIC CHAT THE RED CARD
EA Sports FC 24 is a game that is designed to be played with friends online – but connecting a much wider audience of players. EA Sports FC 24 is a game that is designed to be played with friends online – but connecting a much wider audience of players.

CELEBRATE THE VARIETY
EA Sports FC 24 is a game that is designed to be played with friends online – but connecting a much wider audience of players. EA Sports FC 24 is a game that is designed to be played with friends online – but connecting a much wider audience of players.

Meet Our Expert
EA Sports FC 24 is a game that is designed to be played with friends online – but connecting a much wider audience of players. EA Sports FC 24 is a game that is designed to be played with friends online – but connecting a much wider audience of players.

National Online Safety
#WakeUpWednesday

@nationalonline_safety

Users of this guide do so at their own discretion. No liability is entered into. Current as of the date of release: 18.10.2023

Attendance Matters



IMPORTANT REMINDER

In accordance with School and Trust Policy any unauthorised absences (that are not subject to exceptional circumstances) will be subject to a fixed penalty notice.

Current School Attendance is 95.7% (same as last week) this is just below the DFE target of 96%. We need to try and make sure we can maintain whole school attendance this year and aim for 96 - 98%!

We strongly advise that any holiday in term time should be avoided due to the impact of lost learning time on children. Please be aware that leave of absence (holiday) during term time will not be authorised except in exceptional circumstances. It is school policy to refer any unauthorised absence due to holiday to the local authority who may issue a fixed penalty notice. This is a penalty of up to £120 per child, per parent and so can add up to a significant amount. The school does not receive any revenue from fines; the money is paid to the Local Authority. In addition, we now have a new system in school for pupils who are late. Pupils must be escorted to the office in the main building and a form completed by parents/carers to sign the pupils in and indicate the reason for the lateness. This is for our records and also to avoid pupils becoming distressed.

All gates are opened at 8.20am, KS1 & 2 staff will be in attendance and children remain in the yard until school doors are opened just before 8.30am. For Nursery and Reception children gates are opened for access and to ease congestion on Clifton Avenue and staff are not in attendance until school doors are then opened just before 8.30am. Children should remain supervised until then. Pre-School will open at 8:25am.

LATE MARKS ALSO IMPACT NEGATIVELY ON ATTENDANCE PLEASE TRY TO BE ON TIME!

Spirituality at Prior's Mill CE Primary School

What Is Spirituality?

It is very difficult to put into words what 'spirituality' actually is because it is a very personal experience. It differs from person to person, and often spirituality changes within people during their lifetime. Spirituality is not the same as having a religion or faith; a person can be spiritual without having a particular faith.

As a school, we have defined spirituality as:

"Spirituality is not something we can see; it is something we feel inside ourselves. It is about awe and wonder, asking questions, inspiration and being aware of something 'bigger' outside of ourselves."

Teaching Opportunities and Strategies

At Prior's Mill we follow the Liz Mills approach to provide opportunities for spiritual development:

WINDOWS: giving children opportunities to become *aware* of the world in new ways; to **wonder** about life's 'Wows' (things that are amazing) and 'Ows' (things that bring us up short). In this children are learning about life in all its fullness.



MIRRORS: giving children opportunities to *reflect* on their experiences; to **think** about life's big questions and to consider some possible answers. In this they are learning from life by exploring their own insights and perspectives and those of others.



DOORS: giving children opportunities to *respond* to all of this; to **do** something creative as a means of expressing, applying and further developing their thoughts and convictions. In this they are learning to live by putting into action what they are coming to believe and value.



We provide **WINDOWS** throughout our curriculum. Children reflect (**MIRRORS**) on their learning, experiences and global issues at our school and often identify **DOORS** for themselves. They may hear of a local issue or an international event and request to take action, through fund raising and raising awareness. We also work with the local community through local fundraising and other activities. We also take part in Comic Relief, Children in Need, as well as identifying other charities to support during the year.

We also use this format of Windows, Mirrors and Doors within our Collective Worship.

School staff can develop spirituality in school through:

Establishing and maintaining a partnership between pupils, parents and staff; recognising and respecting the faith background of the children and their families;

Taking part in, and supporting, collective acts of worship;

Being good role models in their conduct towards other members of the community;

Promoting an attitude of respect for other people and for others' views;

Nurturing consideration for and generosity towards others.

Drawing on the experiences of pupils and their families during religious education lessons and beyond;

Recognising and being constantly aware of the needs and backgrounds of each individual pupil;

Being willing to develop their own knowledge and understanding of the Christian faith and the faiths of others;

Having a positive attitude to the value of spiritual education;

Conducting themselves towards others considerately and respecting the views and beliefs of others in line with the Prior's Promise.

Pupils can do this through:

Taking an active part in acts of collective worship;

Participating in activities which promote the skills allowing them to engage in examination of and reflection upon religious belief and practice;

Conducting themselves towards others considerately and respecting the views and beliefs of others in line with the Prior's Promise.

Parents can help through:

Adopting a positive attitude to the value of spiritual education;

Supporting the school's Christian ethos and acts of community worship such as assemblies and church services;

Respecting the views and beliefs of others;

Conducting themselves towards others considerately and respecting the views and beliefs of others in line with the Prior's Promise.

Worship Theme - Vulnerability



Vulnerability

WHAT DOES VULNERABLE FEEL LIKE?

II Corinthians 4:7-9

A real clay pot or an image would be helpful. I wonder what the story of this clay jar might be? I wonder what it contained or might contain now? I wonder how strong this jar might be? I wonder how we might be like a clay jar? – with reference to the Bible passage. Clay pots are one of the most commonly found items during archaeological digs. They often aren't found complete, many are chipped, cracked or damaged, but there must be strength and stability in the material used to create the pot for it to survive hundreds of years under the ground. I wonder what it is about a clay pot that helps it to withstand these pressures? Maybe it was the choice of material, the loving care of the maker, or the protection of the soil around it?

The image of the jar reminds Christians that despite their fragility, the treasure of God's life-giving strength shines out of them filling them with hope, courage, guidance and wisdom. We are all amazing! This song

<https://www.youtube.com/watch?v=fVNKjOfbMiU> builds on this idea. It could be followed up in classes or through a display in school.

'What makes you vulnerable, makes you beautiful.' (Brene Brown)

A spiders web is incredibly vulnerable, but there is beauty in the strength of its design. What if a spider never created its web out of fear of it breaking or being destroyed?

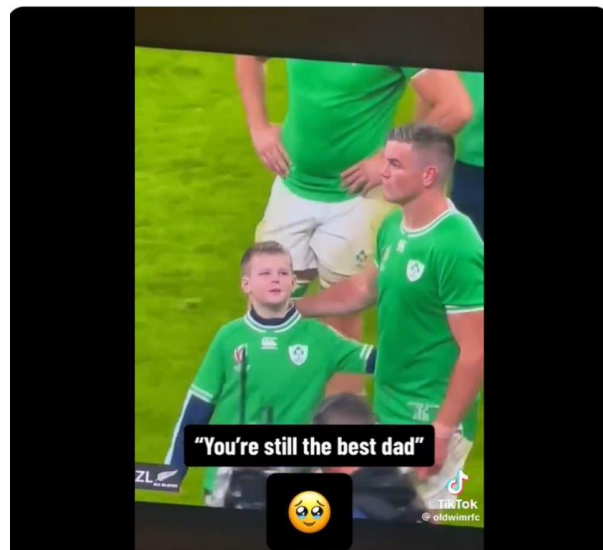
The dictionary describes vulnerability as ‘The emotion we experience during times of uncertainty, risk and emotional exposure.’

Vulnerability is not weakness! It is not winning or losing, it is having the courage to show up, be seen when you have no control over the outcome. It is about asking for what you need, having hard conversations and talk about how you are feeling. Brené Brown

Christians believe, that being vulnerable means you are honest with who you are, how you feel and acknowledging the parts of yourself that you would rather keep hidden. It’s not hiding behind an ‘Instagram life’, its about being real with God and people you meet. It is hard to be vulnerable, to feel out of control or anxious about situations. Christians are reminded throughout the Bible that God’s power and grace is enough, that even in times of vulnerability, He is in control and we will not be left abandoned or alone.



**"VULNERABILITY IS THE
BIRTHPLACE OF LOVE,
BELONGING, JOY,
COURAGE, EMPATHY,
ACCOUNTABILITY,
AND AUTHENTICITY."**



Class News



Thank you to Mrs Legender and Mr Richards for sharing their super class collective worships this week - pictures will be in the newsletter next week.

KEY DATES



Key Dates

Parent Consultation Wednesday 25th

Friday 27th October Break up for half-term

***Items for the Harvest Hampers which pupils donate to the foodbank can be sent in at any time - any donations gratefully received.**



1 - And Finally...enjoy the weekend!

Picture News

2-08--england-primary-powerpoint-2023-10-13



What's happening
in the news this week?



Let's have a look at this week's

16th – 22nd October 2023



Let's look at this week's story



The tree at the centre of the world-famous 'Sycamore Gap' on Hadrian's Wall, England, has reportedly been deliberately felled on the night of 28th September and was discovered by walkers the next morning. The National Trust said it was 'shocked and saddened' by the felling of the tree, which won English Tree of the Year in 2016.



Learn more about this week's story [here](#).

Watch this week's useful video [here](#).

This week's Virtual Picture News [here](#).



© Picture News 2023

How does it make me feel?

Read the information below, which explains a bit more about what happened at Sycamore Gap.

What was the Sycamore Gap tree?

The Sycamore Gap tree is an estimated 300-year-old sycamore tree, which stood alongside Hadrian's Wall near Crag Lough in Northumberland, England.

It was located in a dip in the landscape and was always a very popular photographic subject, often described as one of the most photographed trees in the country.

On the morning of Thursday 28th September, the National Trust confirmed that the tree had been 'deliberately felled' overnight. Currently, it is not known how or why the tree was cut down.



Pictured: The felled tree at Sycamore Gap. Source: Owen

Can the tree be saved?

The stump of the tree remains healthy and could be used to

grow new shoots, Andrew Poad from the National Trust has said. Though others, including Rob Ternent, head gardener at the

Alnwick Garden in Northumberland, warned the beauty spot will never be the same again.

Can you think of any ways that the tree's legacy can be remembered?

© Picture News 2023



Look at the resource below, which shares some famous trees from around the world.



Ashikaga Flower Park
in Japan is a popular
tourist attraction,
especially in the spring,
due to its famous
cherry blossom trees.

The Willow Tree, found in Lake Wanaka, New Zealand, stands alone in the water. Many people visit and take photographs because of its unusual location and the beautiful landscape that surrounds it.



Tree Root Cave, also known as the Tree of Life is found in Kalaloch, Washington State, USA. Many people describe it as magical, as it is still standing, even though its

The Boab Prison Tree also known as Kunumudj is thought to be 1,500 years old and was used as a holding area for Aboriginal prisoners. It is found near Derby in



Why do you think each tree is famous? Which would you most like to visit?

Can you name any other famous trees?



Look at the resource below, sharing people's views



“My home was next to a beautiful tree. Each year it grew and we had to begin trimming its branches to keep it from damaging my home. Eventually, we had to make the decision to have it felled as it was becoming too much of a danger.”

“I feel passionately about nature and conservation so I am a member of the National Trust. They aim to ‘work to tackle climate change, protect historic sites and help people and nature thrive.’ I love visiting their sites and knowing they are preserved and protected is fantastic.”

Sarah





“Some land in my town now has planning permission to build new homes. These will be affordable homes, which I know are needed in our local area. Some people are very angry as they do not want more homes because their views will be spoiled.”

Eddie

“The mountain near me is so popular that erosion has become a big problem. The grass is being killed and the ground is wearing away.”

Diego



Can you think of a time when you might have impacted the natural world?

Was it a positive or negative impact?

© Picture News 2023

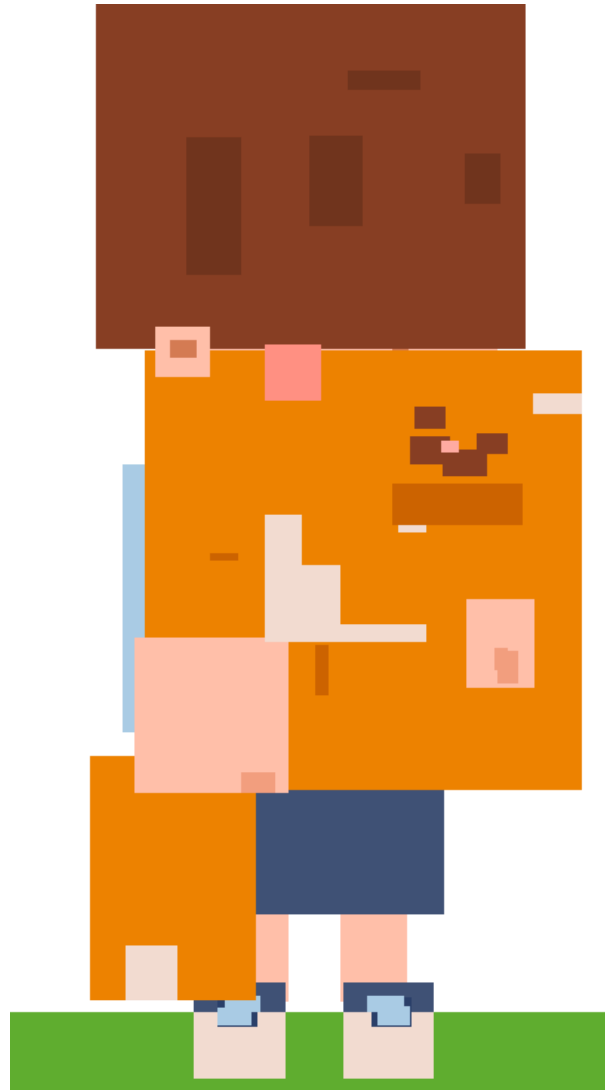


Reflection



Places, people, animals, and objects can all hold an important place in our hearts. Even after they are gone, we can find ways to keep their memories alive.

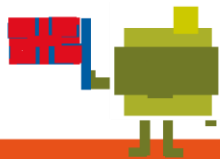






© Picture News 2023





British Value



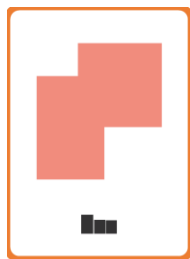
Individual Liberty

We can choose whether to care for and protect the places and things that are special to ourselves or others. It is important to remember our actions have consequences.

Protecte Characteris



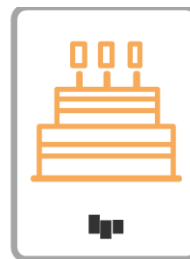
The things that we value can form part of our beliefs and shape how we choose to live. We should never be treated unfairly because of our beliefs.



Race



Sexual Orientation



Age



Disability



Gender Reassignment



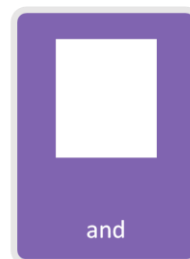
Religion and Beliefs



Language and Culture



Sex

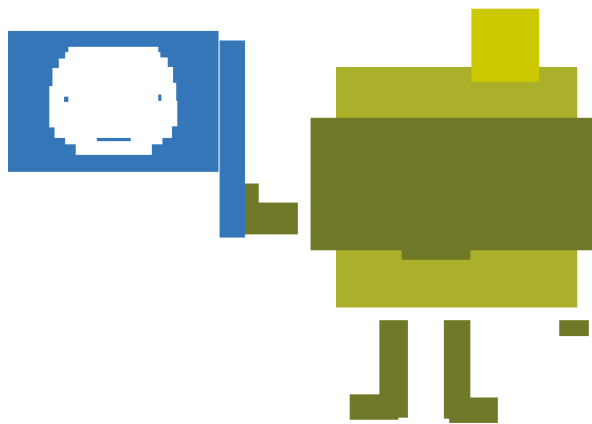


and



UN
of a

**We have the right to give
our opinions freely on issues
that affect us and things
that are important to us.
Adults should listen and
take us seriously.**





© Picture News 2023

Useful vocabulary



D



Beauty spot

A place in the country that is popular because of its beautiful scenery.

Though others, including Rob Ternent, head gardener at the Alnwick Garden in Northumberland, warn the **beauty spot** will never be the

Landscape

All the visible features of an area of land.

It was located in a dip in the **landscape** and was always a very popular photographic subject.

Deliberately

Intentionally, on purpose.

The tree at the centre of the world-famous 'Sycamore Gap' on Hadrian's Wall, England, has reportedly been **deliberately** felled.

Legacy

A situation that has developed as a result of past actions and decisions.

Can you come up with any ways that the tree's **legacy** can be remembered?

Felling

Cutting down a tree.

The National Trust said it was 'shocked and saddened' by the **felling** of the tree.

Sentimental value

The value of something based on personal or emotional associations rather than material worth.

Talk about how other things, such as toys or animals, can also hold a lot of meaning to us, or

Can you use them in your writing this week?

© Picture News 2023



How can we remember things that

were important to us?

The tree at the centre of the world-famous 'Sycamore Gap' on Hadrian's Wall, England, has reportedly been deliberately felled on the night of 28th September and was discovered by walkers

the next morning. The National Trust said it was 'shocked and saddened' by the felling of the tree, which won English Tree of the Year in 2016.



- Look at this week's poster. Does anyone know where it was taken or why the tree in the image has been in the news?
- Read the information found on the assembly resource, which explains a bit more about what happened at Sycamore Gap. Can you come up with any ways that the tree's legacy can be remembered?
- Watch this week's useful video, which shows the Sycamore Gap tree before and after its felling. Talk about how people in the local area, others who cared about the area, and those who have special memories of the tree must be feeling.
- Can you think of a place that is special to you? Where is it and why is it important? How would you feel if that place was damaged or changed in some way?
- Talk about how other things, such as toys or animals, can also hold a lot of meaning to us, or 'sentimental value'. Can we think of anything in our homes or at school like this? Explain that it isn't always the newest or shiniest things that can be the most special!

Reflection

Places, people, animals, and objects can all hold an important place in our hearts. Even after they are gone, we can find ways to keep their memories alive.

KS1 focus

What are other famous trees from around the world?



- What do you already know about trees? Can you name any of the different parts of a tree? Can you name any tree species (types)?
- A tree is a plant. They live longer and grow taller than any other living organism (living thing). There are trillions of trees found all over the world. Some are even famous and people make special trips to see them.
- Look at resource 1, which shares some famous trees from around the world. Why do you think each tree is famous? Which would you most like to visit? Can you name any other famous trees?
- Locate the countries where each tree can be found on a world map. Have you ever visited another place or been on holiday? Did you notice the trees? Were they similar to or different from the ones found in your local area? How?

- Different species of trees can be found living in different countries, as they are suited to different climates, but all trees help us. Can you think of some of the ways trees help us e.g., provide food/shelter/shade, produce oxygen?
- Think about some of the trees found in your local area. Do you have a favourite tree? Do you have a special tree? Is there a tree that is famous in your local area?

Reflection

Every tree in the world is unique. Some are famous as many people know about them; others are not. We may have a tree that is special just to us!

KS2 focus

How much do you value the natural world?



The natural world is all of the plants, animals and other things that are found in nature that have not been made by humans. Make a list of things we might find in the natural world e.g., mountains, seas, rivers, birds, insects, trees.

Many people enjoy the natural world and spending time in nature. Have you ever seen a view that was so beautiful or spectacular it took your breath away? Where was it? Can you describe the view to someone?

Look at resource 2, sharing people's views about human impact on the natural world. Can you think of a time when you might have impacted the natural world? Was it a positive or negative impact?

Think about Diego's comment. Were you aware that whilst enjoying our natural world, we may also be causing it harm? Discuss how many popular walking routes have been maintained so that they are conserved and can still be enjoyed.

Amara felled a tree. How do you feel about this? What do you believe is the difference between Amara's tree being destroyed and the tree at Sycamore Gap?

Discuss how important the natural world is to you. Is it something you enjoy? Is there anything you do to conserve, preserve or protect it?

Reflection

We live in a world with many beautiful natural places that we can visit and enjoy. We can take responsibility for these places and help to protect them so they will be there for years to come.



KS2 follow-up ideas

Option 1

Think about a place or thing in the natural world that means a lot to you. Perhaps a sea view that takes your breath away, a plant that commemorates something or a park that makes you feel happy and safe. Write a poem about it. Use the following to help you plan:

Write down words and phrases to describe what you can see, hear, smell.

Describe how it makes you feel.

Describe what it means to you.

Use these ideas to create your poem. Try to include

Option 2

Explore the different parts of a tree and its function. Think about:

- Which part of a tree absorbs water and nutrients from the ground?
- What part of a tree makes food from water, carbon dioxide and light?
- Which part of the tree transports water, nutrients and food between the leaves and the roots?
- Which part of a tree anchors it?
- Which parts of the tree make up the crown?

If you can, go for a walk around your local area and spend some time looking at the different trees you find. Compare their leaves, branches and trunks and discuss what size their roots may be!

KS1 follow-up ideas

Option 1

Look at the images of trees found on resource 1

or use the diagram below.

- Can you name any parts of the tree?
- Can you see the roots?
- Where can the bark be found?
- Point to its leaves, branches, trunk.
- Does the tree have any fruit?

Draw and label your own tree picture.



Option 2

Produce some tree-inspired art. You could try one or more of the following:

- Make a bark rubbing.
- Collect some fallen autumn leaves to make a collage.
- Paint a picture of your favourite tree.
- Trace the shapes of different leaves found in your school ground.
- Make a fingerprint tree.

Create a display of your art in your classroom!

This week's useful websites

This week's news story

www.bbc.co.uk/news/uk-england-tyne-66957589

This week's useful video

The Sycamore Gap, then and now

www.bbc.co.uk/news/av/uk-66960442

This week's Virtual Picture News

www.picture-news.co.uk/discuss

This week's vocabulary

Beauty spot

A place in the country that is popular because of its beautiful scenery.

Though others, including Rob Ternent, head gardener at the Alnwick Garden in Northumberland, warn the beauty spot will never be the same again.

Deliberately

Intentionally, on purpose.

The tree at the centre of the world-famous 'Sycamore Gap' on Hadrian's Wall, England, has reportedly been deliberately felled.

Felling

Cutting down a tree.

The National Trust said it was 'shocked and saddened' by the felling of the tree.

Landscape

All the visible features of an area of land.

It was located in a dip in the landscape and was always a very popular photographic subject.

Legacy

A situation that has developed as a result of past actions and decisions.

Can you come up with any ways that the tree's legacy can be remembered?

Sentimental value

The value of something based on personal or emotional associations rather than material worth.

Talk about how other things, such as toys or animals, can also hold a lot of meaning to us, or 'sentimental value'.



Seaside

Zip Wire?



Pictured: A view of Scarborough. **Source:** Canva.

It has recently been reported that plans to build a 650m zip wire in Scarborough, North Yorkshire have been submitted. Big Bang Promotions, an adventure tourism and activity provider, has said it would like to build four zip lines, each 650m in length in the seaside town! The company says the

experience would start in front of the town's Open Air Theatre in North Bay and head towards the Scalby Mills miniature railway station, offering 'panoramic views out over the North Bay' along the way. The clifftop zip line adventure experience would launch from a temporary, steel-framed, 33m-tall tower, which can be put



Pictured: A person on a zip wire. **Source:** Canva.

up in two weeks and taken down in less. The tower has already been used for a zip wire in London. The ride would end at a similar, but shorter, 17m-tall tower, where the rider would be given the choice to exit through the tower or take a further 'drop ride' down to the ground! The application is currently pending consideration with North Yorkshire Council and the local planning authority, so their decision is awaiting.

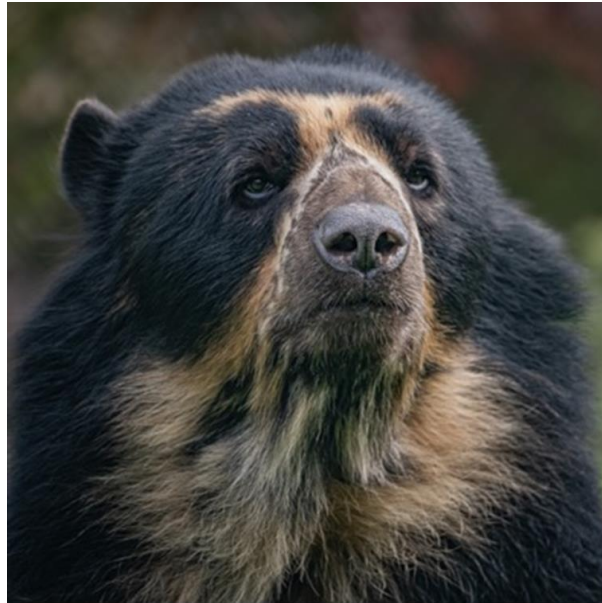
Is a long, high zip wire your idea of fun?

Would you like to go on something like this?

'Paddington Bear' welcomed at Chester Zoo

A 10-year-old, rare, spectacled (also known as Andean) bear has moved into Chester Zoo to join their breeding programme. Oberon, nicknamed Obe, has been described by team members at the zoo as the perfect match for their resident female, Pacha. Zookeepers hope the pair will have cubs together and this will increase the numbers of the last remaining short-faced bear. The bears, who get their name from their distinctive fur pattern that gives the appearance of 'spectacles' on their nose, originate from South America and were made famous by the character, Paddington Bear. Scientists estimate that there are only 10,000 Andean bears alive today. The International Union for the Conservation of Nature (IUCN) lists the bears as Vulnerable to Extinction. The English zoo says Obe is vital to the survival of his species and that it is excited he is getting his 'bear-ings' at his new home. 'Male Andean bear Oberon has settled in nicely since arriving here in Chester, spending his time exploring, climbing trees and checking out the sights and scents of his new home. His arrival

is an exciting new chapter for Andean bears in European conservation zoos like ours,' reported Mike Jordan, Director of Animals and Plants at Chester Zoo on the zoo's website.



Pictured: Andean bear Oberon.
Source: Chester Zoo Facebook page.



Share your thoughts and read the opinions of others www.picture-news.co.uk/discuss

© Picture News 2023

Astronaut and two cosmonauts land in Kazakhstan after being stuck in space



A NASA astronaut and two Russian cosmonauts have returned to Earth after an unplanned extended stay in space. The trio, who were stuck in space for just over a year, have safely landed in a remote area near Zhezkazgan, Kazakhstan. The original mission was scheduled to last 180 days. American astronaut, Frank Rubio, has set a record for the longest US spaceflight, after being away from home for 371 days. They couldn't come back to Earth from the International Space Station as planned because their original return capsule was hit and damaged by space junk. The Soyuz MS-23 capsule was then launched in February as a replacement to bring Frank

Pictured: NASA astronaut Frank Rubio in Kazakhstan as he landed back on Earth. Source: NASA X page.

and cosmonauts, Sergey Prokopyev and Dmitri Petelin, back to their home planet. Since launching from Kazakhstan in September last year, the crew have logged 253 million kilometres and travelled around the world nearly 6,000 times. Astronauts and cosmonauts do the same work in space. The difference in their job titles is due to who they have been trained by - Astronauts are trained by NASA (National Aeronautics and Space Administration), ESA (European Space Agency), CSA (Canadian Space Agency), or JAXA (Japan Aerospace Exploration Agency). Cosmonauts are trained by the Russian Space Agency.

Last week's topic:
Can anyone break a world record?



We think that as long as someone works hard, and has talent they will be able to break a world record!
Year 5 Hawthorn Class

Yes, anyone can break a world record. Even if it [is] crazy, and you're the first person to do it/have the longest record to do it etc., it is still a record.

Yes, because if you practice you make perfect.
Kenza

Let us know what you think about this week's

www.picture-news.co.uk/discuss Picture News Ltd,
 Colber Lane,
 Bishop Thornton,
 Harrogate,
 North Yorkshire, HG3 3JR

help@picture-news.co.uk

[@HelpPictur](https://twitter.com/HelpPictur)

Share your thoughts and read the opinions of others www.picture-news.co.uk/discuss

© Picture News 2023

TAKEHOME

How can we remember things that were important

In the news this week

The tree at the centre of the week's feature 'Picture News Gap' in Harrogate's 2023 England Non-wooded tree survey...
 ...deliberately felled on the night of 28th September and was discovered by workers the next morning. The National Trust said it was shocked and saddened by the felling of the tree, which won England's tree of the year in 2022.

Things to talk about at home ...
 ■ It takes a while to grow but does that is very special to you? What is it that makes it special?
 ■ How do you think the people living close to Picture News Gap will be feeling? How do you believe the felling of the tree could be...

Please note any interesting thoughts or comments

Share your thoughts and read the opinions of others www.picture-news.co.uk/discuss



© Picture News 2023

Bonus Picture News - Conflict in Israel

IH2-08--england-primary-powerpoint-2023-10-11

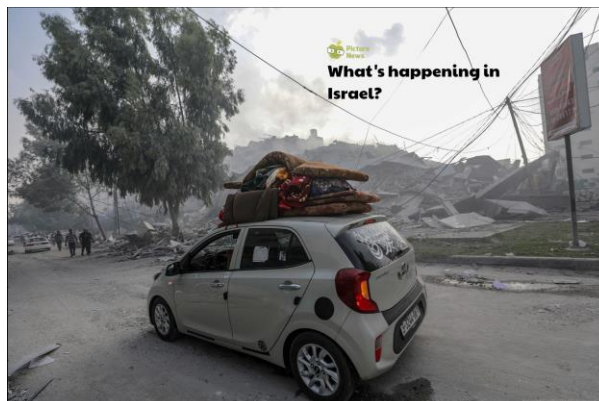


What's happening
in the news?



Let's have a look at the poster

Israel and Hamas





Let's look at the story



The Prime Minister of Israel, Benjamin Netanyahu, has said the country is at war after an attack by Palestinian militant group, Hamas. Fighters from the group crossed into Israel from Gaza in an unexpected attack on 7th October.

The attacks hit civilians as well as soldiers. Israel responded with air strikes into the Gaza Strip (Gaza), saying the targets were militant sites. However, the United Nations (UN) has reported that these strikes displaced around 200,000 Palestinians, while Gaza health officials say thousands have been injured.



Learn more about this story [here](#).

Watch the useful video [here](#).

© Picture News 2023

Resource



Look at the information below, which explains more about what is currently happening in Israel.

What is Hamas?

Hamas is a Palestinian militant group that controls the Gaza Strip. The group wants to take over Israel and change it to an Islamic state. Since the group took over Gaza in 2007, there have been several periods of fighting between it and Israel. Israel has attacked Hamas with air strikes, and, alongside Egypt, has blockaded the Gaza Strip for 17 years for security reasons. Hamas is classified as a terrorist group by many countries including Israel, the EU, UK, and the USA. The group is backed by Iran, which funds it and provides weapons.

What is the Gaza Strip?

How did the conflict begin?



Map of Israel Source: BBC World Maps

The Gaza Strip is a 6-mile-wide and 25-mile-long territory that borders Egypt and Israel. Just over two million people live there.

The Palestinian territories include Gaza and the West Bank (shown in the map above). Israel was declared a state in 1948, although the land in the territories is still referred to as Palestine by those who do not recognise Israel as a country. These, according to the Bible, were also the lands of Jewish kingdoms and so are regarded by Jews as their ancient homeland.

The most recent conflict began when fighters from Hamas crossed into Israel from Gaza to attack. Following the start of the assault, Hamas' military commander, Mohammed Deif, called on Palestinians everywhere to join the group's operation.

Israel's Prime Minister, Benjamin Netanyahu, told Israelis they are going into a long and difficult

© Picture News 2023



Main question



What's happening in Israel?

Listen Think Share

- Look at the poster image, it shows a car with belongings passing the site of a destroyed 14-storey tower block in Gaza City, following air strikes there. Share any information or prior knowledge about what is currently happening in Israel and Gaza.
- Read through the news story and share your thoughts and reflections now you have read more.
- Watch this week's useful video, which shows what life is currently like for people living in Israel. What impact is the current situation having on the lives of people there?

Following the start of the assault, Hamas' military commander, Mohammed Deif, called on Palestinians everywhere to join the group's operation. On Sunday, Israel's Prime Minister, Benjamin Netanyahu, told Israelis they are going into a "long and difficult war". What do you think he means by this?

Read through the information found on the resource, which explains more about the history of the conflict.

UK Prime Minister Rishi Sunak has said he will support Israel's Prime Minister, Benjamin Netanyahu. 'We will do everything that we can to help. Terrorism will not prevail,' he said. What do you think other countries can do to help in situations like this? Do you think enough is being done?



Useful Weblinks



News story: www.bbc.com/news/world-middle-east-67039975

Useful video: www.bbc.co.uk/newsround/av/67052739

© Picture News 2023

Thanks to Mrs Ann Hope for sharing this lovely message:

Our lovely lollypop man Peter, is raising money for Cancer Research for his wife Claire who is now in remission from lung cancer.

Peter has had both his knees replaced but he is planning to walk as much as possible to raise money.

He is such a lovely man and a great lollypop man

https://fundraise.cancerresearchuk.org/page/peters-giving-page-885?fbclid=IwAR3xfRJGBaXWIRCTfTbvCYY70cU1FDoeJKYDqOjmlU104LYoYQuq_Oc-91M



2 - [Peter's Giving Page](#) Thanks for taking the time to visit my Giving Page. Cancer is happening right now, which is why I'm fundraising right now for Cancer Research UK. There's no time to lose! Donate to my page today and help bring forward the day when all cancers are cured. fundraise.cancerresearchuk.org

Contact Us



If you would like to contact us about anything in the newsletter or need an additional conversation then please don't hesitate to catch me outside on the yard or through making an appointment at the office.

Safeguarding

The school safeguarding policy is on the website and a paper version can also be requested from the office. Safeguarding is at the heart of all we do at Prior's Mill CE Primary School.

Prior's Mill C.E. Primary School

Clifton Avenue, Billingham. Stockton-on-Tees, TS22 5BX

Tel: 01642 650 426

Email: office@priorsmill.org.uk

Visit us on the web at <https://priorsmill.org.uk/>

School Vision

As an inclusive Church of England primary school, we welcome children and families of all faiths and none to be part of our school family which has a distinctly Christian character and ethos. At Prior's Mill, we encourage everyone to discover, flourish and grow in their talents, nurturing their God given gifts and potential. We work with passion to foster a love of learning, a love of community and personal resilience. Following in the footsteps of Jesus, we are a school where kindness, forgiveness, respect and honesty underpin our words and actions.

Biblical Narrative - The Parable of The Mustard Seed – Mark 4:30-32 (NIV)

“What shall we say the kingdom of God is like, or what parable shall we use to describe it? It is like a mustard seed, which is the smallest of all seeds on earth. Yet when planted, it grows and becomes the largest of all garden plants, with such big branches that the birds can perch in its shade.”

School Values

We give our best - We are kind - We are honest - We are respectful - We forgive