



Prior's Mill C.E. Primary School

Newsletter March 14th 2025

Welcome to the Prior's Mill Newsletter - this is shared weekly and will contain key dates and information, paper copies are available at the office 14.03.25

In This Issue



This week we include:

- **Message from Mr Linsley**
- **School Council**
- **Sporting Stars**
- **Musician of the Month**
- **Digital Leaders**
- **Attendance**
- **Worship Theme**
- **Class News**
- **Key Dates**
- **NEW! Picture News (We thought you might like to read 'Picture News' this is shared with children in a class worship every week)**

- **Contact Us**
- **Safeguarding**

Heads Up - Raby Castle Visit for KS1



Raby Castle

Pupils in Year 1 had a fantastic visit to Raby Castle and really enjoyed their tour of the grounds and looking inside all of the different rooms in the Castle. It's a shame that the weather wasn't better but staff, pupils and parent volunteers had a fantastic time. Please take time to look at the pictures later in the newsletter.

Traffic Advice

The Local Authority have let us know that parking patrols will be operating in our area over the next term looking for vehicles that are left idling as this has a negative impact on air quality. Leaflets are included below.

School Starters September 2025 If you have a child who is eligible to start Reception in 2025 then please get in touch as we can provide you with the contact details for the admissions team at Stockton Local Authority.

Breakfast Club - Early Adopter Scheme We have been selected by the DFE to be one of the pilot schools for the free Breakfast Club Scheme being put in place by the new Labour Government. This will start after the Easter Holidays and last until the end of the summer term, we are currently working out what the implications are and will be getting in touch with parents soon to gauge interest in the scheme. The scheme will be open to all parents and it will provide free breakfast club provision from 8 -8:30am.

The booking system is now open for the first two weeks back after Easter but closes in two weeks time. If you want a space either paid or free please book on as it will help us understand staffing levels. We'll not be able to admit any pupils who are not booked in so please make use of the booking system. If you have any questions please ask the office.

QUICK REMINDER: KEY DATES

- 21/3/25 Comic Relief Day
- 26/3/25 Parent Consultation
- 31/3/25 Easter Foodbank Donations
- 2/4/24 Parent Consultation

- 10/4/25 Break Up for Easter Holiday
- 11/4/25 PD Day
- 28/4/25 Return to School

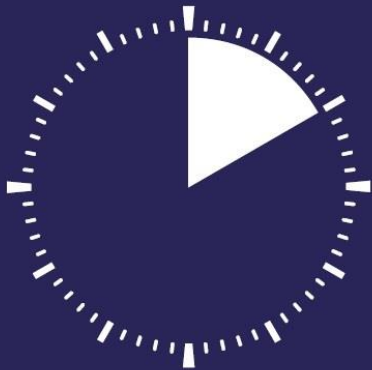
Key Dates additions:

- Y2 Snappy Spring @ Thornaby 18.03.25
- Class 5 Worship 19.03.25
- Class 7 Worship 20.3.25
- Tempest Class Photos for Reception and Year 6 26.03.25
- Year 3 Bake Sale (to raise money for beach litter picking trip) 26.03.25
- MM Production 'Little Princess' 4.04.25

Don't be idle!

Attention Drivers

Avoid idling and help improve air quality, protect our health and save money.



Idling for even

10 seconds

uses more fuel and
creates more pollution
than restarting the
engine.



Idling is bad for your vehicle

When idling, a vehicle's fuel is only partially combusted because the engine isn't at peak temperature.



Stockton-on-Tees
BOROUGH COUNCIL

Why is Air Quality, Active Travel and Smarter Driving Important?

Stockton-on-Tees Borough Council has produced this leaflet to encourage smarter driving and use of alternative methods of transport. The aim is to encourage people to be more active, improve air quality and to cut CO₂ emissions.

Why is this important?

Road vehicles contribute to pollution and climate change as engines burn fuel which produces air pollutants and CO₂. You can reduce these emissions by following the simple advice in this leaflet.

Air Quality and Health

Long-term exposure to pollution can cause poor health for everyone, but particularly for children, older people and those living with pre-existing lung or heart conditions.

Poor air-quality is linked to cardiovascular and respiratory disease, lung cancer, dementia and premature death. It also can make asthma worse, can cause coughing, wheezing and shortness of breath.

High traffic areas and idling cars can increase the levels of pollutants in and around schools and even just short periods of time being exposed to high levels of pollution can impact children's breathing. It is thought this is due to children breathing closer to the source of emissions and their developing lungs.

Improving air quality will have huge benefits for everyone, especially children and young people.

What options are available?

There are many ways in which you can help by considering your transport options. Where possible you should consider:

- 1. Is your journey necessary in the first place?**
- 2. Could you walk instead?**
Walking is a great way to keep fit, protect the environment and save money. See <https://thehubstockton.com/>
- 3. Could you cycle instead?**
Cycling to school or work is fast, environmentally friendly, and it keeps you fit. See <https://thehubstockton.com/>
- 4. Could you use public transport?**
Especially for longer journeys. See <https://www.stockton.gov.uk/public-and-community-transport>
- 5. Could you use environmentally friendly transport, like an electric vehicle?**
See <https://teesvalley-ca.gov.uk/projects/transport/electric-vehicle-charging-infrastructure-project/>
See <https://www.zap-map.com/live/>
- 6. Could your school or workplace develop a sustainable travel plan?**



Smarter Driving Tips

If you cannot walk, cycle or use public transport and the use of your vehicle is essential then why not consider these smarter driving tips which will not only save you money on fuel but will also reduce emissions and support the local environment.

- 1. Plan your journey**
Combine errands with other trips, like picking children up from school after your weekly shopping trip.
- 2. Avoid short journeys**
Cold engines use twice as much fuel as warm engines. A catalytic converter takes 5 miles to become effective.
- 3. Remove unnecessary weight**
Carrying extra weight in the boot makes your engine work harder and burn extra fuel. Roof racks and bike carriers also reduce fuel efficiency by affecting the car's aerodynamics.
- 4. Avoid air conditioning**
It uses high energy levels and puts huge demands on fuel consumption.
- 5. Service your vehicle regularly**
It will reduce fuel consumption and lengthen your vehicle's lifespan.
- 6. Check your tyre pressure**
Pumping up is cutting down! You can reduce your fuel consumption by about 2%.
- 7. Try car-share**
Sharing journeys with colleagues and friends means less cars on the road and will reduce the cost of journeys too.
- 8. Switch the engine off**
An idling vehicle uses ½ litre of fuel per hour and increases pollution. If you're stuck in a jam switch the engine off.
- 9. Don't warm the engine**
Idling to heat the engine wastes fuel and causes rapid engine wear.
- 10. Drive at the right speed**
The most efficient speed depends upon the type of car but it's typically 45-50mph where speed limits permit. At 70mph you will use 15% more fuel than at 50mph.
- 11. Change gear at lower revs**
It will save fuel and create fewer emissions. The optimum gear change is at 2000 rpm (petrol) and 2500 rpm (diesel).
- 12. Drive smoothly**
Sharp acceleration and hard breaking wastes fuel, and increases pollution and CO₂ emissions.

Air quality and Sustainable information

For further information about air quality, please phone: 01642 393939

Email:
environmental.health@stockton.gov.uk

You can visit us at:

Municipal Building, Church Road
Stockton-on-Tees TS18 1TW

Open 9am to 5pm Monday to Friday
(This is by prior appointment only)

www.stockton.gov.uk



CARE ABOUT YOUR AIR!

Protect the
environment and
children's health,
switch off your
engine when
parked.

- An idling car generates enough emissions to fill 150 balloons every minute. This can lead to poor local air quality, particularly around schools at drop off and pick up times.
- Children breathe more rapidly than adults absorbing more of these harmful emissions.
- Children are especially vulnerable to the effects of air pollution, which can aggravate conditions such as asthma and can be linked to other lung conditions including respiratory infections.

PICTURE OF THE WEEK!



School Council



Mr Farrell has agreed (after some persuasion from the school council) to take part in the Great North Run in September and to raise funds for Guide Dogs for the Blind and our other school charities. We are going to be looking at showing our support by organising a summer fun run.



Hartlepool & Stockton-on-Tees SAFEGUARDING CHILDREN PARTNERSHIP



1 - We have been invited to establish a Children's Safeguarding Council in school. After Easter, Mrs Hanson and Mrs Mackay will work with our School Council representatives to explore the topic set by the Safeguarding Children Partnership. The topic for the next half term is about staying safe in the community. Our School Council will be given the opportunity to ask our KS2 children some questions about feeling safe outside of the home and share their findings with us. All questions and answers will be anonymous.

We are looking forward to working with the Safeguarding Children Partnership with this important topic.

Sporting Stars





2 - Sports Leaders

Musician of the Month



Home Information Sheet - Mozart



About: Wolfgang Amadeus Mozart (1756 – 1791) was a prolific and influential composer of the Classical period. Despite his short life, his rapid pace of composition resulted in more than 800 works of virtually every genre of his time. Many of these compositions are acknowledged as pinnacles of the symphonic, concertante, chamber, operatic, and choral repertoire. Mozart is widely regarded as among the greatest composers in the history of Western music. His Requiem was largely unfinished by the time of his death at the age of 35, the circumstances of which are uncertain and much mythologised.

Genres: Classical, Opera, Chamber, Choral

Active from: 1764-1791

Origin: Salzburg, Austria

Digital Leaders - Reading Advice



3 - Hugo (Y3), Felicity (Y4), Luke (Y5) and Joey (Y6) are the new school Digital Leaders.

Parent guide for this week - Spending and Saving

If there are any apps or online sites that parents would like a fact sheet about then please get in touch and we'll try and provide one.

Any safeguarding concerns can be relayed to:

Mr Linsley - Designated Safeguarding Lead

Miss Huddart - Deputy Designated Safeguarding Lead

As a parent or carer you play a key role in keeping your child safe online. Find out more about commonly used social media platforms at

<https://saferinternet.org.uk/guide-and-resource/social-media-guides>

What Parents & Educators Need to Know about

ROBLOX

AGE RESTRICTION
PEGI
7

Roblox is one of the most popular video games among children. In 2020, the game's developers claimed that more than half of the USA's children had played it. As a 'sandbox' title, the game lets players create their own gaming experiences with Roblox Studio to build custom levels, which can then be shared online.

WHAT ARE THE RISKS?

ONLINE PLAY RISKS

Because Roblox connects random players across the world, it can put younger players into an environment with anonymous users who could use the platform for nefarious reasons. For example, some role-play games are used for online dates and mature role play, which could expose youngsters to inappropriate messages in the public chat box.

MATURE CONTENT

Content is difficult to moderate throughout Roblox, due to the number of games available. This is particularly notable on smaller games and experiences, but in summary, some of the games and experiences offered on the platform contain age-inappropriate content that could easily be seen by young players.

IN-GAME SPENDING

The majority of games within Roblox have extensive monetisation options, usually through season passes or microtransactions. Purchases can range in value from a few pennies up to much larger sums of money. While some games offer a lot of content via purchases, others can offer very little for real world money, causing younger players to end up out of pocket.

ANONYMOUS PLAYERS

The anonymity of users can leave players vulnerable to bullying, harassment, and predatory behaviour. Without the right parental controls or monitoring, users can connect with each other via personal messages or friend requests, and it is very difficult to know who's behind a username in this vast online world.

RISK OF ADDICTION

Roblox games can feature rewarding or satisfying mechanics that keep players coming back – or persuade them to stay logged-in for much longer. Like most games, they focus on interactivity, with constant rewards via in-game unlocks and currencies, which can sometimes lead to an addictive need to remain online for long periods of time.

SCAMS

Many of the games on Roblox feature collectible items, pets, or characters. These objects, while digital, are worth a lot of real money on certain online markets. Scammers will attempt to trade with younger users in the hopes of getting rare items that can be sold for real money, manipulating the child into handing them over, usually via misleading information.

Advice for Parents & Educators

MONITOR THE CONTENT

While Roblox does implement plenty of moderation tools and parental controls, it's up to parents and guardians to monitor the types of games a child or impressionable player is experiencing. If a youngster wants to play Roblox, be sure to check out which specific games they want to play within it, and get a good idea of their content.

TAKE ADVANTAGE OF TOOLS

Use the parental controls within the game itself and teach youngsters how to report and block other players. Knowing the powers within their reach will make Roblox a safer, happier experience. You can set age ranges for who's allowed to contact you, close public chat boxes, block spending, and even make your Roblox profile completely private. All these options are helpful in cutting off bad actors from engaging with children.

PLAY TOGETHER

Consider playing Roblox with the children in your care. There are few more effective ways to see how monetisation works, gauge whether the game could lead to addictive behaviours, or even witness how interaction between players works, than sitting down and trying the game for yourself. This should help you figure out whether it's suitable for particular children.

TEACH ONLINE BEHAVIOURS

Have an open conversation about the risks of online play and how to spend money wisely. By being honest and giving tips on how a younger user can protect themselves, you can empower them to not only take care of themselves, but others too. Any user can be reported to Roblox moderators by other players for behaving inappropriately. With this knowledge, younger players can be aware of what to look for and help prevent it.

Meet Our Expert

Dan Lipscombe is a videogame journalist and author of over 20 books on gaming, including books on Minecraft, Fortnite, Roblox, and more. For 15 years he has been writing about his passion for gaming. When he's not playing games, he's talking about them at GAMINGbible.



The National College®

4 - Roblox has been in the news this week about the potential dangers of their chat function please read the parent guide for advice.

Attendance Matters



In accordance with School and Trust Policy any unauthorised absences (that are not subject to exceptional circumstances) will be subject to a fixed penalty notice.

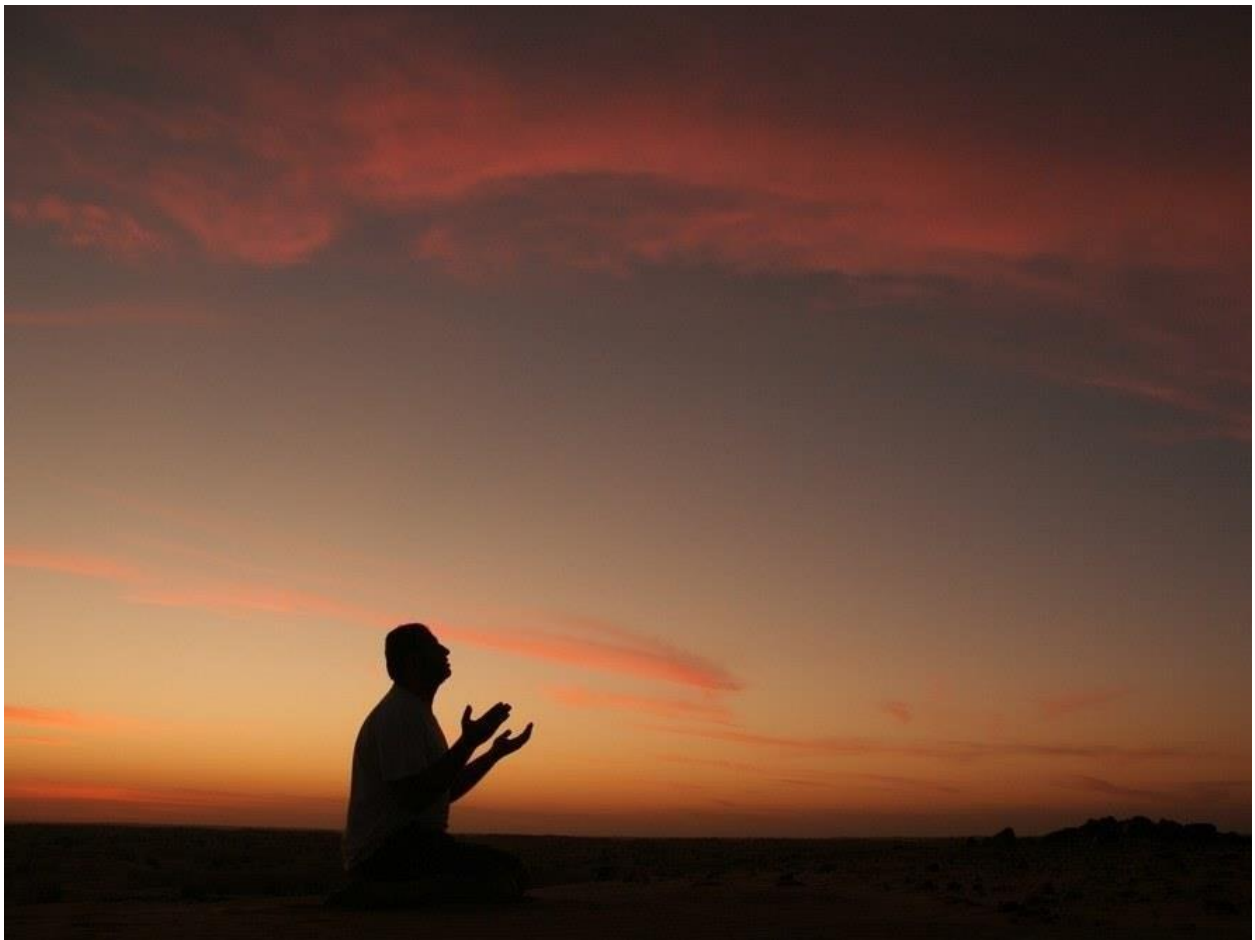
Current School Attendance is 95% this is just below the DFE target of 96%.

We strongly advise that any holiday in term time should be avoided due to the impact of lost learning time on children. Please be aware that leave of absence (holiday) during term time will not be authorised except in exceptional circumstances. It is school policy to refer any unauthorised absence due to holiday to the local authority who may issue a fixed penalty notice. This is a penalty of up to £120 per child, per parent and so can add up to a significant amount.

The school does not receive any revenue from fines; the money is paid to the Local Authority. In addition, we now have a new system in school for pupils who are late. Pupils must be escorted to the office in the main building and a form completed by parents/carers to sign the pupils in and indicate the reason for the lateness. This is for our records and also to avoid pupils becoming distressed.

LATE MARKS ALSO IMPACT NEGATIVELY ON ATTENDANCE PLEASE TRY TO BE ON TIME!

Worship Theme - KINGDOM RULING Isaiah 11:1-5



Music is used at Coronations such as this one:

<https://www.youtube.com/watch?v=inKSvLk7kil>

It gives a new king or queen the authority to rule over their people – it gives both power over but also responsibility for their new Kingdom I wonder what powers and what responsibilities

those should be? I wonder what qualities the new king or queen might need in order to exercise those powers and live up to that responsibility?

Look at some of the things which are associated with being a queen or a king eg orb, sceptre, crown.

<https://thecrownchronicles.co.uk/explanation/symbols-of-monarchy-sovereigns-orb-and-sceptre/>

I wonder if you remember the words from Isaiah 11 which we heard before Christmas which are words of prophecy about God's kingdom, and the King who had been promised?

Isaiah 11:5 Goodness and fairness will give him strength. They will be like a belt around his waist.

I wonder what we can learn from this sort of king or queen and how it might help us lead our lives in school today?



Class News



After School Club made some lovely mini quiches with Mrs Hitchen! We shared them with neighbours in our local community along with some special cards!





































Reception have looked at and talked about gravity in our PE lesson this week and have had lots of fun throwing and catching balloons. On Tuesday we read the story of the Three Billy Goats Gruff and built some boats for the goats to travel in, some of our boats were able to float but some sadly didn't. Both classes have also took part in a celery experiment to see if the sticks can change colour by dipping them in coloured water, all the children have been excited on a morning to see some of the sticks have turned red and some have turned blue.



Year 1 Raby Castle Visit - Year 1 had an amazing trip to Raby Castle. This trip was part of our History unit, Castles. The children explored the castle and shared their knowledge about castles, as well as learning lots of new facts.































A Fantastic Worship from the Children in Mr Stokes Class!



Key Dates



- 10/3/25 British Science Week
- 21/3/25 Comic Relief Day
- 26/3/25 Parent Consultation
- 31/3/25 Easter Foodbank Donations
- 2/4/24 Parent Consultation
- 10/4/25 Break Up for Easter Holiday
- 11/4/25 PD Day
- 28/4/25 Return to School

Picture News



Collective Worship PowerPoint (5)



What's happening
in the news this week?





Let's have a look at this week's

10th – 16th March 2025



Drawing Connections

God	Creation	Fall	People of God
Incarnation	Gospel	Salvation	Kingdom of God

© Picture News 2025

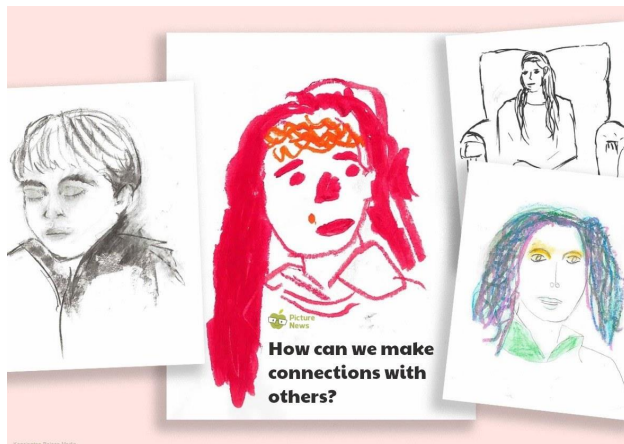
The Princess of Wales has recently shared pictures, drawn by herself, Prince George, Princess Charlotte, and Prince Louis, of each other. The artworks, shared on social media, are part of the Shaping Us campaign, which highlights how we develop skills to connect with others from a young age. The pictures also aim to raise awareness of an exhibition, launched by The Princess, at the National Portrait Gallery in London, encouraging children to explore their relationships and feelings.

Think together and talk



Think together and talk

Do you think taking time to focus on someone else can help us feel closer to them? How?
How might sharing our talents or skills, such as drawing, bring people together?
How can showing love and kindness help build a community that reflects the Kingdom of God?



What does the Bible have to say?



The Kingdom of God reflects God's vision for how life should be lived on Earth – full of love, kindness and care for one another.

By prioritising meaningful and loving connections with others, as The Royal Family have done with their portraits, we can help to bring this vision to life in our own communities.

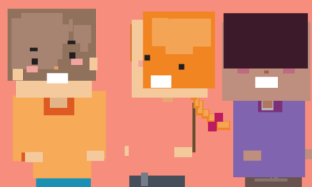


“My command is this: Love each other as I have loved you.”

John 15:12



What do others think?



☐ **We are more alike,
my friends, than we
are unlike** ☐

Maya Angelou – memoirist,
poet and civil rights activist

**Time to be quiet
and to pray**



Prayer

Dear Lord,

Thank you for showing us how to love and care
for one another,

Help us to create strong friendships and find
ways to connect with others, reflecting your
Kingdom in our homes, schools, and
communities,

May our actions show kindness and lift each
other up,
Amen

Continue thinking



Key Stage 1 class discussion

Have you ever drawn or created something for a friend or family member? What was it? How did it make them feel?
What do you enjoy doing with friends?
How can doing things together, like making art, help us feel more connected?

Key Stage 2 class discussion

How can focusing on someone else's good qualities help us connect with them?
Why might it be important to truly notice and appreciate others in our communities?
Think of one thing you could do to strengthen a current friendship.
How does connecting with others help us create a world that looks more like the Kingdom of God?

Time to worship

Bind Us Together, Lord
[Click here for the hymn online](#)



Bind us together, Lord, bind us together,
With cords that cannot be broken,
Bind us together, Lord, bind us together, Lord,
Bind us together with love.



There is only one God,
There is only one King,
There is only one Body,
That is why we can sing.



Bind us together, Lord, bind us together,
With cords that cannot be broken,
Bind us together, Lord, bind us together, Lord,
Bind us together with love.



Bind us together, Lord, bind us together,
With cords that cannot be broken,
Bind us together, Lord, bind us together, Lord,
Bind us together with love.





There is only one God,
There is only one King,
There is only one Body,
That is why we can sing.



Bind us together, Lord, bind us together,
With cords that cannot be broken,
Bind us together, Lord, bind us together, Lord,
Bind us together with love,



Collective

Worship



Pupil involvement

Begin by showing some portraits of people. Do you think they took a long time to create? What does the artist need to think about when drawing someone? How do they capture a person's likeness?

Tell the children that, today, they will each become artists! Have children turn towards a partner and imagine they are painting each other's portrait. You could provide pencils and paper for the children to do this activity if this is practical. Encourage the children to look carefully at their partner and consider: What shapes can they see in their partner's face? What colours would they use? Would they prefer pencil, pens, paints, or other materials?

After a few minutes, stop the activity. How did it feel to spend time quietly observing someone else? What new things did they notice about their partner? Did they enjoy the experience?

Conclude by highlighting that, in today's fast-paced world, taking time to truly notice and appreciate others is an important way to build real connections.

Christian Value: Friendship

Theme: Drawing Connections

Pupil talk

Do you think taking time to focus on someone else can help us feel closer to them? How?
How might sharing our talents or skills, such as drawing, bring people together?
How can showing love and kindness help build a community that reflects the Kingdom of God?

Think

The Princess of Wales has recently shared pictures, drawn by herself, Prince George, Princess Charlotte, and Prince Louis, of each other. The artworks, shared on social media, are part of the Shaping Us campaign, which highlights how we develop skills to connect with others from a young age. The pictures also aim to raise awareness of an exhibition, launched by The Princess, at the National Portrait Gallery in London, encouraging children to explore their relationships and feelings.

The Kingdom of God reflects God's vision for how life should be lived on Earth—full of love, kindness and care for one another. By prioritising meaningful and loving connections with others, as the royal family have done with their portraits, we can help to bring this vision to life in our own communities.

Invitation prayer

Dear Lord,
Thank you for showing us how to love and care for one another,
Help us to create strong friendships and find ways to connect with others, reflecting your Kingdom in our homes, schools, and communities,
May our actions show kindness and lift each other up,

Key stage 1 class discussion

Have you ever drawn or created something for a friend or family member? What was it? How did it make them feel?

What do you enjoy doing with friends?

How can doing things together, like making art, help us feel more connected?

Key stage 2 class discussion

How can focusing on someone else's good qualities help us connect with them?

Why might it be important to truly notice and appreciate others in our communities?

Think of one thing you could do to strengthen a current friendship.

How does connecting with others help us create a world that looks more like the Kingdom of God?

Worship song

Bind Us Together, Lord



© Picture News 2025



Contact Us



If you would like to contact us about anything in the newsletter or need an additional conversation then please don't hesitate to catch me outside on the yard or through making an appointment at the office.

Clifton Avenue, Billingham. Stockton-on-Tees, TS22 5BX

Tel: 01642 650 426

Email: office@priorsmill.org.uk

Visit us on the web at <https://priorsmill.org.uk/>¹

Safeguarding

The school safeguarding policy is on the website and a paper version can also be requested from the office. Safeguarding is at the heart of all we do at Prior's Mill CE Primary School.

Designated Safeguarding Lead - Mr Linsley

Deputy Designated Safeguarding Lead - Miss Huddart

¹<https://priorsmill.org.uk/>

EMERGENCY HELP DURING THE WEEKEND / HOLIDAYS

During the weekend / holidays, whilst your children are playing outside with friends, we would recommend that your child knows where to go to for help if they need it. This might be a grandparent or family friend, as well as at home. It is important that your child knows how to call the emergency services for help.

We have been advised that you talk to your child about risk-taking behaviour and the potential consequences of any decisions that they make whilst away from home. Give your children the confidence to say “no” to taking part in any risky or anti-social behaviour with their peers.

Of course, we want the children to enjoy the weekend and part of that is becoming more independent from parents; however, we want all our children to return to school fit, well and safe after the weekend.

TEWV Crisis team (CAMHS & Adults) has now changed.

There is a new system and people must call 111- option 2 - this is the 111 Mental Health line & call handlers will transfer to the local crisis team appropriately.

The Children’s Hub is the first point of contact for anyone who has a concern about the welfare or safety of a child or young person.

The Children's Hub

Stockton: 01642 130080

childrenshub@hartlepool.gov.uk²

Crisis support line

If someone you know, is experiencing a mental health crisis call NHS 111 and select the mental health option.

Billingham & Stockton Borough Foodbank

4-6 West Precinct

Billingham Town Centre

²<mailto:childrenshub@hartlepool.gov.uk>

Billingham TS23 2NH

07583 575522

<https://billinghamstocktonborough.foodbank.org.uk>

info@billinghamstocktonborough.foodbank.org.uk³

If you have any welfare or safeguarding concerns relating to a child in school during term time, please do not hesitate to contact –

Mrs ALLISON HANSON

PUPIL WELFARE & SAFEGUARDING OFFICER

Prior's Mill C/E Primary School

Billingham TS225BX

01642 650426

office@priorsmill.org.uk

[School Vision](#)

As an inclusive Church of England primary school, we welcome children and families of all faiths and none to be part of our school family which has a distinctly Christian character and ethos. At Prior's Mill, we encourage everyone to discover, flourish and grow in their talents, nurturing their God given gifts and potential. We work with passion to foster a love of learning, a love of community and personal resilience. Following in the footsteps of Jesus, we are a school where kindness, forgiveness, respect and honesty underpin our words and actions.

Biblical Narrative - The Parable of The Mustard Seed – Mark 4:30-32 (NIV)

“What shall we say the kingdom of God is like, or what parable shall we use to describe it? It is like a mustard seed, which is the smallest of all seeds on earth. Yet when planted, it grows and becomes the largest of all garden plants, with such big branches that the birds can perch in its shade.” **School Values**

We give our best - We are kind - We are honest - We are respectful - We forgive

³<mailto:info@billinghamstocktonborough.foodbank.org.uk>